

Tees CCPP Project

The Tees Combined Cycle Power Plant Project

Land at the Wilton International Site, Teesside

Proposed Non-Material Change – Consultation Report

The Planning Act 2008 (as amended)

**The Infrastructure Planning (Examination Procedure) Rules 2010
(as amended) – Rule 17**



Applicant: Sembcorp Utilities (UK) Limited
Date: June 2018

Proposed Non-Material Change – Consultation Report

DOCUMENT HISTORY

Document Ref	8.40		
Revision	1.0		
Author	Jake Barnes-Gott (JBG)		
Signed	JBG	Date	27.06.18
Approved By	Geoff Bullock (GB)		
Signed	GB	Date	27.06.18
Document Owner	DWD		

GLOSSARY

Abbreviation	Description
Applicant	Semcorp Utilities (UK) Limited
CCGT	combined cycle gas turbine
CCS	carbon capture and storage
CHP	combined heat and power
DCO	Development Consent Order
EIA	Environmental Impact Assessment
ES	Environmental Statement
HRSG	heat recovery steam generator
MW	megawatts
NSIP	Nationally Significant Infrastructure Project
Order	Tees Combined Cycle Power Plant Order
PA 2008	The Planning Act 2008
PINS	Planning Inspectorate
RCBC	Redcar and Cleveland Borough Council
SCU	Semcorp Utilities (UK) Limited
SoS	Secretary of State

Proposed Non-Material Change – Consultation Report

CONTENTS

1 INTRODUCTION 3

Overview 3

SCU 3

The Project Site 3

The Proposed Development 4

The purpose and structure of this document 4

The proposed non-material change 4

The rationale and need for the non-material change 5

2 SCOPE OF CONSULTATION 6

Applicant led consultation 6

ExA led consultation 7

3 RESPONSES RECEIVED AND ANALYSIS 8

4 APPLICANT’S RESPONSES 18

5 SUMMARY AND CONCLUSION 29

APPENDIX 1 – CONSULTEE LETTER AND NOTICE 30

APPENDIX 2 – CONSULTEE LEAFLET AND NOTICE 31

APPENDIX 3 – INSPECTION LOCATIONS 32

APPENDIX 4 – NEWSPAPER NOTICES 34

APPENDIX 5 – EXA CONSULTATION LETTER 35

APPENDIX 6 – CONSULTATION RESPONSES 36

TABLES

TABLE 3.1 – CONSULTATION RESPONSES AND ANALYSIS 9

TABLE 4.1 – APPLICANT’S RESPONSES 19

Proposed Non-Material Change – Consultation Report

1 INTRODUCTION

Overview

- 1.1 This Consultation Report has been prepared on behalf of Sembcorp Utilities (UK) Limited ('SCU' or the 'Applicant') in respect of its application (the 'Application') for a Development Consent Order (a 'DCO'). The Application was accepted for examination by the Secretary of State (the 'SoS') for Business, Energy and Industrial Strategy on 18 December 2017. The examination (the 'Examination') began on 10 April 2018.
- 1.2 SCU is seeking a DCO for the construction, operation and maintenance of a new gas-fired electricity generating station with a nominal net electrical output capacity of up to 1,700 megawatts ('MW') at ISO conditions (the 'Project' or 'Proposed Development'), on the site of the former Teesside Power Station, which forms part of the Wilton International Site, Teesside.
- 1.3 A DCO is required for the Proposed Development as it falls within the definition and thresholds for a 'Nationally Significant Infrastructure Project' (a 'NSIP') under Sections 14 and 15(2) of the Planning Act 2008 ('PA 2008').
- 1.4 The DCO, if made by the SoS, would be known as the 'Tees Combined Cycle Power Plant Order' (the 'Order').

SCU

- 1.5 SCU provides vital utilities and services to major international process industry customers on the Wilton International site on Teesside. Part of Sembcorp Industries, a Singapore-based group providing energy, water and marine services globally, Sembcorp Utilities UK also owns some of the industrial development land on the near 810 hectares (2,000 acre) site which is marketed to energy intensive industries worldwide.
- 1.6 SCU owns the land required for the Proposed Development.

The Project Site

- 1.7 The Project Site (the 'Site') is on the south west side of the Wilton International Site, adjacent to the A1053. The Site lies entirely within the administrative area of Redcar and Cleveland Borough Council ('RCBC') which is a unitary authority.
- 1.8 Historically the Site accommodated a 1,875 MW Combined Cycle Gas Turbine power station (the former Teesside Power Station) with the ability to generate steam for utilisation within the wider Wilton International site. The Teesside Power Station ceased generation in 2013 and was demolished between 2013 and 2015.
- 1.9 SCU has identified the Site, based on its historical land use and the availability of natural gas supply and electricity grid connections and utilities as a suitable location for the Project. In summary, the benefits of the Site include:
- brownfield land that has previously been used for power generation;
 - on-site gas connection, supplied from existing National Grid Gas Plc infrastructure;
 - on-site electrical connection, utilising existing National Grid Electricity Transmission infrastructure;
 - existing internal access roads connecting to a robust public road network;
 - availability of a cooling water supply using an existing contracted supply (from the Wilton Site mains) and existing permitted discharge consent for effluent to the site drainage system
 - screening provided by an existing southern noise control wall, approximately 6 m in height;
 - potential for future Combined Heat and Power ('CHP') and Carbon Capture and Storage ('CCS'); and

Proposed Non-Material Change – Consultation Report

- existing services, including drainage.

1.10 A more detailed description of the Site is provided at Chapter 3 ‘Description of the Site’ of the Environmental Statement (‘ES’) Volume 1 [APP-045].

The Proposed Development

1.11 The main components of the ‘Proposed Development are summarised below:

- **Work No. 1** – a natural gas fired electricity generating station located on land within the Wilton International site, Teesside, which includes the site of a former CCGT power station, with a nominal net electrical output capacity of up to 1,700 MWe at ISO Conditions; and
- **Work No. 2** – associated development comprising within the meaning of section 115(2) of the 2008 Act in connection with the nationally significant infrastructure project referred to in Work No. 1.

1.12 Please refer to Schedule 1 of the draft DCO [APP-005] for more detail.

1.13 It is anticipated that subject to the DCO having been made by the SoS (and a final investment decision by SCU), construction work on the Project would commence in around the second half of 2019. The construction of the Project could proceed under one of two scenarios, based on SCU’s financial modelling, as follows.

- **‘Scenario One’**: two CCGT ‘trains’ of up to 850 MW are built in a single phase of construction to give a total capacity of up to 1,700 MW.
- **‘Scenario Two’**: one CCGT train of up to 850 MW is built and commissioned. Within an estimated five years of its commercial operation the construction of a further CCGT train of up to 850 MWe commences.

1.14 The above scenarios have been fully assessed within the ES.

1.15 A more detailed description of the Project is provided at Schedule 1 ‘Authorised Development’ of the draft DCO [APP-005] and Chapter 5 ‘Project Description’ of the ES Volume 1 [APP-047].

The purpose and structure of this document

1.16 The purpose of this document is to set out the consultation responses received in response to the Applicant’s request for a non-material change (submitted on 02 May 2018); the scope of consultation; the nature of each response and the main issues raised; and the Applicant’s response (where necessary).

1.17 The remainder of this document is structured as follows:

- Section 2 – Scope of consultation carried out;
- Section 3 – Responses received and analysis;
- Section 4 – Applicant’s response; and
- Section 5 – Summary and conclusion.

The proposed non-material change

1.18 The following non-material change has been proposed:

- an increase in the maximum height of the turbine hall buildings from 25 metres (‘m’) to 32m; and
- an increase in the maximum height of the heat recovery steam generator (‘HRSG’) buildings from 44m to 45m.

1.19 The turbine hall and HRSG buildings comprise Work No.1A (a) and Work No. 1A (b) of the draft DCO [APP-005]. The current maximum heights (25m and 44m respectively) are set out in Schedule 2, Requirement 4 of the draft DCO [APP-005].

The rationale and need for the non-material change

- 1.20 The Applicant is currently engaged in a tendering process with a number of contractors, with one to be selected once the Proposed Development is consented and prior to construction. Since submission of the Application in November 2017, one of the contractors has identified that it might be necessary to increase the maximum height of the turbine hall and HRSG building. This has necessitated the need to request a change to the maximum heights set out within the draft DCO.

Proposed Non-Material Change – Consultation Report

2 SCOPE OF CONSULTATION

- 2.1 There have been two consultation exercises in respect of the proposed non-material change, as follows:
- consultation led by the Applicant – starting 01 May and ending 7 June 2018 (38 days); and
 - consultation led by the Examining Authority ('ExA') and administered by the Planning Inspectorate ('PINS') – starting 08 May and ending 29 May 2018 (22 days).

- 2.2 These for the most part ran concurrently. Further detail in respect the scope of each is provided in the remainder of this section.

Applicant led consultation

- 2.3 The Applicant reviewed, amongst other things, the 'Planning Act 2008: Guidance for the examination of applications for development consent' produced by the Department of Communities and Local Government ('DCLG') and 'Advice note sixteen: How to request a change which may be material' ('Advice Note 16') produced by the Planning Inspectorate ('PINS') to determine the scope of consultation to be carried out.

- 2.4 Advice Note 16 suggests that non-statutory consultation may be necessary when a change is proposed to a DCO application, particularly where the proposed change is material. Notwithstanding that the proposed change is considered to be non-material, the Applicant carried out non-statutory consultation. The Applicant followed much of the guidance in the advice note, particularly in respect of consultation, to ensure that a robust consultation exercise was carried out.

- 2.5 The scope of the consultation was as follows:

- letter, notice and CD copy of documents setting out the proposed change and requesting comments sent to all Section 42, 43 and 44 parties consulted at the pre-application stage (copy of the letter and notice provided at **Appendix 1** to this report);
- leaflet and notice setting out the proposed change and requesting comment sent to all Section 47 parties consulted at the pre-application stage (copy of the leaflet and notice provided at **Appendix 2** to this report);
- consultees given at least 28 days to respond and contact details for the Applicant provided;
- change documentation deposited at the same inspection locations utilised at the pre-application stage (inspection locations listed at **Appendix 3** to this report);
- newspaper notices for two consecutive weeks in three local newspapers (copies provided at **Appendix 4** to this report); and notices erected at inspection locations and in proximity to the Project Site.

- 2.6 The Applicant sent a total of 102 letters to Section 42, 43 and 44 parties and 14,000 leaflets to Section 47 parties.

- 2.7 Members of the Applicant's project team also attended the following events/groups:

- Lazenby Environment Group – 30 April 2018;
- Grangetown Neighbourhood Action Partnership ('NAP') – 08 May 2018;
- Eston NAP – 16 May 2018; and
- Industrial Briefing Group – 05 June 2018.

- 2.8 At each of the above, the Applicant briefed consultees on the proposed non-material change and answered questions.

Proposed Non-Material Change – Consultation Report

2.9 The scope of consultation carried out was comparable to that recommended for a material change and, on this basis, is considered robust.

ExA led consultation

2.10 The ExA sent a letter to all Interested Parties providing detail in respect of the proposed change and a link to the Applicant's non-material change submission pack on the PINS website. The letters were sent on 02 May and the Interested Parties were given until 29 May 2018 to respond.

2.11 A copy of the consultation letter is included at **Appendix 5** to this report.

Proposed Non-Material Change – Consultation Report

3 RESPONSES RECEIVED AND ANALYSIS

- 3.1 The responses received from consultees are set out in **Table 3.1** overleaf. Copies of the original correspondence from each consultee are included at **Appendix 6** to this report.
- 3.2 A total of 6 responses were received to the ExA led consultation and 7 were received to the Applicant led consultation. Two of the responses were duplicates between the consultation exercises. The responses received were primarily from s42/technical consultees.
- 3.3 The table also sets out the Applicant’s analysis in terms of whether the responses were positive, neutral or negative in nature. The Applicant’s analysis indicates that there were 12 neutral responses and only 1 negative response. The consultees classed as neutral either confirmed that they had no comments to make or that it was accepted that the change is non-material and/or would not contribute to any new or different likely significant environmental effects.
- 3.4 It is considered that the small number of responses (in the context that the Applicant issued in excess of 14,000 letters and leaflets), goes to demonstrate that there was limited interest in the proposed change and that the requested change is in fact non-material and would not contribute to any new or different likely significant environmental effects.

Table 3.1 – Consultation responses and analysis

Ref.	Respondent	Response	Summary of issues	Positive/Negative /Neutral
Applicant led consultation				
NMC-001	Cleveland Fire Brigade	<p>Thank you for including Cleveland Fire Brigade in the consultation of this non material change proposition.</p> <p>I can confirm that I have viewed all the information and have no representation to make on this matter.</p> <p>Should you require any further information please do not hesitate to get in touch.</p>	No specific comments.	Neutral
NMC-002	Northumbrian Water Limited	<p>Thank you for consulting Northumbrian Water on the above proposed development.</p> <p>In making our response to the above consultation Northumbrian Water will assess the impact of the proposed development on our assets and may assess the capacity within Northumbrian Water’s network to accommodate and treat the anticipated flows arising from the development. We do not offer comment on aspects of developments that are outside of our area of control.</p> <p>Having assessed the proposed development against the context outlined above I can confirm that at this stage we would have no comments to make with regards to the change in height of the turbine hall and HRSG building.</p> <p>I trust this information is helpful to you, if you should require any further information please do not hesitate to contact me.</p>	No specific comments.	Neutral
NMC-003	Loftus Town Council	<p>Thank you for your letter dated 3rd May - Loftus Town Council comments as follows:-</p> <p>EN010082- The Tees combined power plant project - consultation on proposed non-material change in relation to building height - NO OBJECTION - members hope that improved transport links will be taken into consideration as part of the</p>	No objection.	Neutral

Document Ref. 8.40
Proposed Non-Material Change – Consultation Report



Ref.	Respondent	Response	Summary of issues	Positive/Negative /Neutral
		full development to increase employment opportunities for residents within Loftus Parish.		
NMC-004	Health and Safety Executive	The proposed changes make no material difference to HSE’s previous advice.	No specific comments.	Neutral
NMC-005	Public Health England	<p>Thank you for notifying Public Health England (PHE) of the proposed changes to this Nationally Significant Infrastructure Project (NSIP). We note the necessary amendments to be made in the application documents and the justification of why the change is considered non-material. On this occasion we have no additional comments to provide at this stage of the NSIP application.</p> <p>We note that we have replied to earlier consultations as listed below and this response should be read in conjunction with that earlier correspondence.</p> <p>Request for Scoping Opinion 15 March 2017 Response to Section 42 20 July 2017</p>	No specific comments.	Neutral
NMC-006	Defence Infrastructure Organisation	<p>Thank you for consulting the Ministry of Defence (MOD) on the above proposed development which was received by this office on 14th May 2018.</p> <p>I can confirm that the MOD has no safeguarding objection to this proposal. I trust this is clear however should you have any questions please do not hesitate to contact me.</p>	No objection.	Neutral
NMC-007	(Member of the local community)	<p>To Sembcorp, the planning inspectorate, the Secretary of State and any other relevant parties I want to object to the requested changes in height increases. I also object to the siting, the purpose of this power station and the uneconomical-wasteful use of gas to produce surplus energy, as Wilton site has already got a power station that produces enough energy for industrial plants there which has already paid out compensation to a number of residents, but not all, for the stench that it causes.</p> <p>This power station plan was also pitched to the community as the green option to provide power there!! This siting of a monster power station again - remember ENRON? will cause massive environmental issues for lazenby as well as the wider communities. The height and width of buildings will totally dominate the skyline, like Enron did. Residents now have hindsight and an insight into the</p>	<p>Objection, issues:</p> <ul style="list-style-type: none"> - Uneconomical use of gas to energy - Already a power station at the site - Environmental issues for local communities - Landscape presence of buildings - Pollution impact on health - Pollution impact on light and sun 	Negative

Ref.	Respondent	Response	Summary of issues	Positive/Negative /Neutral
		<p>effects of power station emissions and the environmental impact on their quality of life they endured.</p> <p>Lazenby is in a valley and in certain weather conditions any emissions are trapped over lazenby and are unable to disperse, also trapping other emissions from other plants. This combined pollution hangs over the village and the wider valley for days blocking light and sun. The steam from Enron also hung heavy in the atmosphere and was forced down like a fog onto our roads, causing traffic hazards. Motorists could not see cars in front of them, people experienced breathing issues, nausea with the air thick with who knows what as we are not privy too what comes out of the stacks!</p> <p>The siting of a power station in this location is unacceptable, its size, it's function and its emissions have a massive environmental impact that have been felt before- this is not a site in this day and age to repeat this same mistake again. Wilton site also has the oil cracker plant which flares when it goes wrong with toxic fumes, black acrid smoke which residents are exposed too as well!!!! and can be seen miles away!!!!</p> <p>The raising of the height of these buildings haven't been shown in relation to the residents that live the nearest to it, which is of note, as only the allotments have been used, which are further away from the proposed building that have been used for scale!</p> <p>I have a blast mound of earth which is supposed to reassure and protect me from any danger from the Enron site between it and my home. My part of lazenby is the closest to it.</p> <p>No one anticipated the blight of the power station stacks, noise and emissions that we have already endured from the Enron scandle-people telling us that energy needs to be produced there! Move these activities further away from communities along the gas line if you must waste our gas reserves. We are saturated with energy production - wind turbines locally produce a renewable green energy that we also needed in this area - were is the energy going that Wilton potentially needs,what's happened to that plan? Or is it that activities on this site can go</p>	<ul style="list-style-type: none"> - Pollution/fog hazards for motorists - Landscape impact of raised buildings hasn't been shown in relation to the residents that live nearest. - References to previous Enron station stacks, noise and pollution - Preference for green energy - Noise 	

Document Ref. 8.40
Proposed Non-Material Change – Consultation Report



Ref.	Respondent	Response	Summary of issues	Positive/Negative /Neutral
		<p>without being challenged due to out dated covenants and provide opportunities for businesses to pursue profits?</p> <p>I don't want to live looking at a giant power station, I want to be able to see the sky, and know what the weather is truly like without having to go out of lazenby to see the sun!</p> <p>I don't want to live in a noisy environment with the turbines grinding and the power hissing in the air day and night and the steam!</p> <p>I don't want to hear that the energy is for potential requirements?</p> <p>We had all of these issues to put up with and the stress it caused with the last power station that was deemed to be needed.</p> <p>Most of those people involved in the last power station project ended up in prison and residents were proved right about all their concerns about the environment and the reduction of their quality of life.</p> <p>I want to register my opposition to these changes.</p>		
ExA led consultation				
NMC-008	Historic England	<p>Thank you for your letter dated 08 May 2018 regarding changes to the original application.</p> <p>Historic England has no further comments to make.</p> <p>We would strongly recommend that you involve the conservation officer Tim Brown and the archaeological advisers at Redcar & Cleveland local authority. They are best placed to advise on local historic environment issues and priorities; how the proposal can be tailored to avoid and minimise potential adverse impacts on the historic environment; the nature and design of any required mitigation</p>	<p>No specific comments.</p> <p>Historic England note that the applicant should also contact archaeological advisors at Redcar and Cleveland Borough Council for further advice.</p>	Neutral

Ref.	Respondent	Response	Summary of issues	Positive/Negative /Neutral
		measures; and opportunities for securing wider benefits for the future conservation and management of heritage assets.		
NMC-009	Health and Safety Executive	Dear Examining Authority, The proposed changes make no material difference to HSE's previous advice.	No specific comments.	Neutral
NMC-010	Public Health England	Thank you for notifying Public Health England (PHE) of the proposed changes to this Nationally Significant Infrastructure Project (NSIP). We note the necessary amendments to be made in the application documents and the justification of why the change is considered non-material. On this occasion we have no additional comments to provide at this stage of the NSIP application. We note that we have replied to earlier consultations as listed below and this response should be read in conjunction with that earlier correspondence. Request for Scoping Opinion 15 March 2017 Response to Section 42 20 July 2017	No specific comments.	Neutral
NMC-011	Natural England	Thank you for your consultation on the above dated 08 May 2018 which was received by Natural England on the same day. Natural England is a non-departmental public body. Our statutory purpose is to ensure that the natural environment is conserved, enhanced, and managed for the benefit of present and future generations, thereby contributing to sustainable development. SUMMARY OF NATURAL ENGLAND'S ADVICE NO OBJECTION Based on the information submitted, Natural England considers that the proposed changes to the development will not have significant adverse impacts on designated sites. Natural England's advice on other natural environment issues is set out below.	No objection. Natural England notes that the Applicant should record its decision that a likely significant effect can be ruled out at the SPAs and Ramsar sites, in order to satisfy the Habitats Regulations.	Neutral

Ref.	Respondent	Response	Summary of issues	Positive/Negative /Neutral
		<p><u>European sites – Teesmouth and Cleveland Coast Special Protection Area (SPA) and Ramsar Site</u></p> <p>Based on the plans submitted, Natural England considers that the proposed changes to the development will not have likely significant effects on the Teesmouth and Cleveland Coast Special Protection Area and Ramsar site and has no objection.</p> <p>To meet the requirements of the Habitats Regulations, we advise you to record your decision that a likely significant effect can be ruled out. The following may provide a suitable justification for that decision:</p> <ul style="list-style-type: none"> The proposed changes will not significantly alter the modelled dispersal areas for the emissions from the development, and so do not affect the conclusions of the HRA. <p><u>South Gare and Coatham Sands Site of Special Scientific Interest</u></p> <p>Based on the plans submitted, Natural England considers that the proposed changes to the development will not damage or destroy the interest features for which the site has been notified and has no objection.</p> <p>Should the proposal change, please consult us again.</p>		
NMC-012	Environment Agency	<p>Thank you for your letter in respect of the proposed changes to the above Development Consent Order (DCO) application, which we received on 8 May 2018.</p> <p>The proposed changes to the original DCO application are:</p> <ul style="list-style-type: none"> an increase in the maximum height of the turbine hall buildings from 25 metres ('m') to 32m; and 	<p>No objection.</p> <p>The EA note that any reduction of the stacks could reduce air dispersion and adversely impact the EIA.</p> <p>The EA note the technical guidance note TGN M1 in relation to air quality monitoring points.</p>	Neutral



Ref.	Respondent	Response	Summary of issues	Positive/Negative /Neutral
		<ul style="list-style-type: none"> an increase in the maximum height of the Heat Recovery Steam Generator (HRSG) buildings from 44m to 45m. <p>We have assessed the submitted information for the proposed changes and have the following comments to make.</p> <p><u>Environment Agency Position</u></p> <p>We consider that the proposed changes do not form a material change to the original DCO application.</p> <p>We have based this reasoning on issues that fall within our remit to comment upon for the DCO application. Based upon the information submitted, we advise that we do not anticipate the proposed changes will generate a new or different likely significant environmental effect than that already assessed within the original DCO application for the reasons outlined below.</p> <p><u>Air Quality</u></p> <p>According to Annex A of Implications of Requested Change on the EIA (IRCE), Doc Ref: 8.3, which replicates building height information from the Preliminary Environmental Impact Report (PEIR) and Environmental Statement (ES), the ES has already modelled environmental impacts using the proposed increased HRSG building height of 45m. Therefore, the applicant has provided environmental impact data for the proposed increase in HRSG height of 1m, and this data suggests there is no change in environmental impact as a result of an increase in the height of the HRSG building from 44m to 45m.</p> <p>Annex A of IRCE shows that the ES has already modelled environmental impacts using a turbine hall building height of 31m. The Rule 17 DCO modification relates to a turbine hall increase from 25m to 32m. Based on the environmental impact information provided for the turbine hall building at 31m, it is reasonable to assume that the proposed 1m increase to the height of the turbine hall is unlikely to cause a significant change in environmental impact. Also, the turbine</p>		



Ref.	Respondent	Response	Summary of issues	Positive/Negative /Neutral
		<p>hall is located further from the stack than the taller HRSG and therefore should be less likely to cause downwash effects.</p> <p>We note that the applicant has presented identical air model results in the PEIR and ES reports, as shown in Annex A of IRCE), for a turbine hall building height of 21.3m in the PEIR and subsequently 31m in the ES. Although, it is possible that the air model results could remain the same for the turbine hall building, there does not appear to be a detailed explanation for why this is the case within the IRCE. This will need to be explained within the DCO documents.</p> <p>We cannot comment further on the environmental impact of the proposed increases in building heights without undertaking a detailed assessment of environmental impact, using the preferred contractor’s stack heights, stack diameters, stack location, building locations and designs.</p> <p><u>Noise</u></p> <p>Altering the height of buildings has the potential to channel noise towards new sensitive receptors. During the determination of the Environmental Permit, an assessment of the preferred contractor’s proposed noise abatement equipment, noise impact assessment and noise monitoring will be conducted. We are unable to provide further comments in respect of this matter at the DCO stage.</p> <p><u>Air Emission Monitoring Platform</u></p> <p>We note that the air emissions monitoring platforms on both stacks, have not been shown on the photomontages.</p> <p>In order to demonstrate compliance with the Environmental Permit, the optimum position of the air emissions monitoring points and the air emissions monitoring platform is an integral part of the overall plant design to ensure the applicant can extract a representative sample of their emissions to air, for analysis. We would anticipate that these large platforms will be located approximately half way up each stack.</p>		

Document Ref. 8.40
Proposed Non-Material Change – Consultation Report



Ref.	Respondent	Response	Summary of issues	Positive/Negative /Neutral
		<p>Guidance on the acceptable location of the air monitoring points and the monitoring platform design are held within Technical Guidance Note TGN M1 “Sampling Requirements for Stack Emissions Monitoring”.</p> <p>The proposed changes to the DCO application are to increase the height of the HSRG building and turbine hall building. However, the applicant’s consultation leaflet does mention that the stacks leading from the gas turbines will be no more than 75m in height and that they will continue to work to see if they can be reduced further. It should be noted that if stack height is reduced, this may reduce air dispersion and therefore adversely affect their Environmental Impact Assessment.</p> <p>In summary, we consider that the proposed changes do not represent a material change to the application. Notwithstanding this, we acknowledge that there may be other issues for example visual appearance and landscape issues, resulting from the proposed changes, which fall outside of our remit to comment upon but could constitute a material change.</p> <p>If you have any questions in respect of the above, please do not hesitate to contact me.</p>		
NMC-013	National Grid	<p>Please refer to National Grid’s relevant rep submitted to the planning inspector in February 2018.</p> <p>National Grid’s position is unchanged Mike Hudson (cc) will continue to negotiate a new head lease on the proposed site.</p>	No comment	Neutral

Proposed Non-Material Change – Consultation Report

4 APPLICANT'S RESPONSES

- 4.1 It is not deemed necessary to respond to the majority of responses received, on the basis that they are primarily neutral and raise no specific comment on the proposed non-material change.
- 4.2 The Applicant has responded to ISH-007 and ISH-012 in **Table 4.1** overleaf.

Table 4.1 – Applicant’s responses

Ref.	Respondent	Consultee response	Applicant’s response
NMC-007	(Member of the local community)	<p>To Semcorp, the planning inspectorate, the Secretary of State and any other relevant parties I want to object to the requested changes in height increases. I also object to the siting, the purpose of this power station and the uneconomical- wasteful use of gas to produce surplus energy, as Wilton site has already got a power station that produces enough energy for industrial plants there which has already paid out compensation to a number of residents, but not all, for the stench that it causes.</p> <p>This power station plan was also pitched to the community as the green option to provide power there!! This siting of a monster power station again - remember ENRON? will cause massive environmental issues for lazenby as well as the wider communities. The height and width of buildings will totally dominate the skyline, like Enron did. Residents now have hindsight and an insight into the effects of power station emissions and the environmental impact on their quality of life they endured.</p> <p>Lazenby is in a valley and in certain weather conditions any emissions are trapped over lazenby and are unable to disperse, also trapping other emissions from other plants. This combined pollution hangs over the village and the wider valley for days blocking light and sun. The steam from Enron also hung heavy in the atmosphere and was forced down like a fog onto our roads, causing traffic hazards. Motorists could not see cars in front of them, people experienced breathing issues, nausea with the air thick with who knows what as we are not privy too what comes out of the stacks!</p> <p>The siting of a power station in this location is unacceptable, its size, it's function and its emissions have a massive environmental impact that have been felt before- this is not a site in this day and age to repeat this same mistake again. Wilton site also has the oil cracker plant which flares when it goes wrong with toxic fumes, black acrid smoke which residents are exposed too as well!!!! and can be seen miles away!!!!</p>	<p>It is notable that many of the matters raised in NMC-007 do not relate specifically to the proposed non-material change or the determination of the Application more generally. For instance, the Applicant is unable to comment on the power station that previously occupied the Site or other facilities and operators on the wider Wilton International Site. Notwithstanding this, where necessary and relevant, the Applicant has responded to the matters raised – see below.</p> <p><u>Siting</u></p> <p>The consideration of alternatives and site selection is set out in ES Volume I, Chapter 5 ‘Project description and alternatives’ [APP-047]. The Site has been selected by the Applicant for the Proposed Development, as opposed to other potentially available sites, for the following reasons:</p> <ul style="list-style-type: none"> • the Site and local area has a history of power generation; • the Site has excellent electrical grid, gas, water and transport links (road) and is a previously developed site, which is considered more attractive to redevelop for large scale power generation than a greenfield site; • the Site is controlled by the Applicant; • the Site is large enough for the Proposed Power Plant and associated infrastructure including CCS; and • the Site and the wider area are of relatively low environmental sensitivity. <p>Importantly, the existing electrical, gas and water connections, and highway access will be available for use by the Proposed Development. This was a major factor in selecting the Site.</p>



Ref.	Respondent	Consultee response	Applicant's response
		<p>The raising of the height of these buildings haven't been shown in relation to the residents that live the nearest to it, which is of note, as only the allotments have been used, which are further away from the proposed building that have been used for scale!</p> <p>I have a blast mound of earth which is supposed to reassure and protect me from any danger from the Enron site between it and my home. My part of lazenby is the closest to it.</p> <p>No one anticipated the blight of the power station stacks, noise and emissions that we have already endured from the Enron scandle-people telling us that energy needs to be produced there! Move these activities further away from communities along the gas line if you must waste our gas reserves. We are saturated with energy production - wind turbines locally produce a renewable green energy that we also needed in this area - were is the energy going that Wilton potentially needs, what's happened to that plan? Or is it that activities on this site can go without being challenged due to out dated covenants and provide opportunities for businesses to pursue profits?</p> <p>I don't want to live looking at a giant power station, I want to be able to see the sky, and know what the weather is truly like without having to go out of lazenby to see the sun!</p> <p>I don't want to live in a noisy environment with the turbines grinding and the power hissing in the air day and night and the steam!</p> <p>I don't want to hear that the energy is for potential requirements?</p> <p>We had all of these issues to put up with and the stress it caused with the last power station that was deemed to be needed.</p> <p>Most of those people involved in the last power station project ended up in prison and residents were proved right about all their concerns about the environment and the reduction of their quality of life.</p> <p>I want to register my opposition to these changes.</p>	<p><u>Need</u></p> <p>The 'need' that exists for new electricity generating infrastructure, such as that proposed, is confirmed in the National Policy Statements ('NPS') for energy infrastructure that were designated by the SoS for BEIS (then the Department of Energy and Climate Change) in July 2011. These NPSs form the primary basis for decisions by the SoS on nationally significant energy infrastructure that falls to be considered under the PA 2008.</p> <p>Part 2 of NPS EN-1 'Government policy on energy and energy infrastructure development' outlines the policy context for the development of nationally significant energy infrastructure. Paragraph 2.1.2 highlights that energy is vital to economic prosperity and social well-being and, as such, it is important to ensure that the UK has secure and affordable energy. Furthermore, producing the energy the UK requires and getting it to where it is needed necessitates a significant amount of infrastructure, both large and small scale.</p> <p>Section 2.2 'The road to 2050' confirms the Government's commitment to meet the UK's legally binding target to cut greenhouse gas emissions by at least 80% by 2050, compared to 1990 levels (paragraph 2.2.1). This will require major changes in how energy is generated and used. It identifies a number of key themes of Government energy policy. These include the transition to a low carbon economy; the power sector and carbon emissions; electricity market reform; and the security of energy supplies.</p> <p>The section on 'electricity market reform' (paragraphs 2.2.16 - 2.2.19) highlights how around a quarter of the UK's generating capacity is due to close by the end of the decade and that while for the time being electricity margins are healthy there is still the need for investment of over £100 billion in the electricity sector alone by the end of the decade. It goes on to state that the</p>



Ref.	Respondent	Consultee response	Applicant's response
			<p>Government is looking at a variety of reforms in order to promote investment so as to replace aging infrastructure.</p> <p>Paragraphs 2.2.20 - 2.2.26 of EN-1 deal with the 'security of energy supplies'. Paragraph 2.2.20 states that it is critical that the UK continues to have secure and reliable supplies of electricity as it makes the transition to a low carbon economy. Furthermore, that to manage the risks to achieving security of supply the UK needs:</p> <ul style="list-style-type: none"> • sufficient electricity capacity to meet demand at all times, including a 'safety margin of spare capacity' to accommodate unforeseen fluctuations in supply or demand; • reliable associated supply chains (for example, fuel for power stations) to meet demand as it rises; and • a diverse mix of technologies and fuels (and fuel supply routes), so that it does not rely on any one technology or fuel. <p>Part 3 of EN-1 'The need for new nationally significant energy infrastructure' defines and sets out the 'need' that exists for nationally significant energy infrastructure. Paragraph 3.1.1 states that the UK needs all the types of energy infrastructure covered by EN-1 (this covers a range of electricity generating capacity, including gas) in order to achieve energy security. Paragraph 3.1.2 goes on to state that it is for industry to propose new energy infrastructure and that the Government does not consider it appropriate for planning policy to set targets for or limits on different technologies.</p> <p>It follows that the energy produced by the Proposed Development would not be surplus or wasted. Please refer to Section 4 of the Planning Statement [APP-036] for more detail in respect of need.</p>



Ref.	Respondent	Consultee response	Applicant's response
			<p><u>Odour</u></p> <p>The Proposed Development would not have impacts in terms of odour, which is a more relevant consideration to waste processing facilities. Chapter 7 'Air Quality' of ES Volume 1 [APP-049] provides an assessment of the effects of the Proposed Development in terms of air quality more generally.</p> <p><u>Landscape and visual</u></p> <p>Table 2.1 of the environmental note [AS-009] submitted as part of the non-material change request details the assessment of the requested change at each viewpoint considered in the EIA. As is evident within the table, the magnitude of impacts at the viewpoints ranges from negligible to medium and the significance of effects from not significant to minor. As is evident in the photomontages (also submitted as part of the non-material change request) [AS-021], whilst there is a perceptible difference in the visibility of portions of the building structures (together with a reduction in prominence of the stacks) from the original photomontages, the overall change is not sufficient to lead to an increase in the rating of the impact magnitude which is still largely dictated by the visibility of the stacks as the tallest structures visible from all viewpoints.</p> <p>In terms of choosing viewpoint for photomontages and assessment in the ES, while a number of viewpoints were chosen, photomontages and photowireline were only prepared for those that were judged to aid assessment/decision making. Other locations where the Proposed Development was unlikely to be seen or would offer similar views to the ones for which montages were developed were excluded, as they would not be of additional benefit for the assessment.</p> <p>As part of consultation, the viewpoints were selected and a list provided in the EIA Scoping Report [APP-062] along with</p>



Ref.	Respondent	Consultee response	Applicant's response
			<p>justifications. The viewpoint locations were agreed with RCBC and were included in the Preliminary Environmental Impact Report and the Scoping Report [APP-062]. Extra viewpoints suggested by members of the public as well as RCBC were also incorporated.</p> <p><u>Major accidents</u></p> <p>ES Volume 1, Chapter 15 'Major accidents' [APP-057] presents an assessment of the major accidents that could be associated with the construction and operation of the Proposed Development. The main points from the assessment are set out below.</p> <p>CCGT gas-fired power stations, such as that proposed, are intrinsically safe operations. Notwithstanding this, a structured risk assessment was undertaken to identify the vulnerability of the Proposed Development to, and from, major accidents and disasters. The assessment considered how the baseline environment (such as existing roads, utilities and natural risks, such as flooding) could interact with the Proposed Development to generate a scenario where a potential major accident or natural disaster could arise.</p> <p>For situations where the potential for major accidents was identified, the embedded mitigation and management within the design of the Proposed Development was considered to identify appropriate controls. The level of regulatory control and/or industry guidance in relation to the potential major accident situations was also considered. Where necessary, additional mitigation has been identified to reduce the accident/hazard risks to an acceptable level.</p> <p>The underlying objective of the assessment was to ensure that appropriate precautionary action is taken, to avoid major accidents or disaster risks which could have significant adverse</p>



Ref.	Respondent	Consultee response	Applicant's response
			<p>effects on the environment. The assessment concluded that appropriate mitigation, management and/or regulatory controls are/or can be in place to minimise the risk of major accidents or impact of natural disasters. As a result, it is considered that there would not be any likely significant environmental effects arising from the vulnerability of the Proposed Development to or from major accidents and natural disasters.</p> <p><u>Noise</u></p> <p>The noise and vibration effects of the Proposed Development are assessed at Chapter 8 'Noise and Vibration' at ES Volume I [APP-050].</p> <p>The location of key noise sensitive receptors has been considered when assessing the effects associate with noise and vibration levels from the various phases of the Proposed Development. Key locations have been selected which are considered to be representative of the nearest and potentially most sensitive existing receptors to the Site.</p> <p>The Proposed Development has the potential to result in noise impacts at the closest residential receptors to the Site. These include Grangetown, Lazenby and Lackenby.</p> <p>The most important potential impacts are from the operation of the Proposed Power Plant which will result in noise from fixed equipment during the night when baseline noise levels are likely to be lowest. These have been mitigated by careful early layout of the Site including placing key external sources such as cooling towers as far from receptors as possible, the retention of a noise barrier which provides noise reduction to residents in Lazenby and the provision of a noise barrier on the western site boundary to reduce noise at Grangetown. On-plant mitigation such as placing key items in buildings or enclosures has also been employed. As a result of these embedded mitigation measures</p>



Ref.	Respondent	Consultee response	Applicant's response
			<p>the resulting noise levels are not expected to result in significant noise effects.</p> <p>The assessment also considered noise associated with HGV on local roads and determined that this would be not significant.</p> <p>It is therefore considered that the noise and vibration impacts associated with the Proposed Development are acceptable.</p>
NMC-012	Environment Agency	<p>Thank you for your letter in respect of the proposed changes to the above Development Consent Order (DCO) application, which we received on 8 May 2018.</p> <p>The proposed changes to the original DCO application are:</p> <ul style="list-style-type: none"> • an increase in the maximum height of the turbine hall buildings from 25 metres ('m') to 32m; and • an increase in the maximum height of the Heat Recovery Steam Generator (HRSG) buildings from 44m to 45m. <p>We have assessed the submitted information for the proposed changes and have the following comments to make.</p> <p><u>Environment Agency Position</u></p> <p>We consider that the proposed changes do not form a material change to the original DCO application.</p> <p>We have based this reasoning on issues that fall within our remit to comment upon for the DCO application. Based upon the information submitted, we advise that we do not anticipate the proposed changes will generate a new or different likely significant environmental effect than that already assessed within the original DCO application for the reasons outlined below.</p> <p><u>Air Quality</u></p>	<p><u>Air Quality</u></p> <p>The Environment Agency is in agreement that an increase in the potential maximum height of the amended gas turbine building (i.e. an increase of 1 m from that modelled for the ES as originally submitted) will not materially alter the air quality model output as presented in Section 7.4.3 of Chapter 7 [APP-049]. This is demonstrated through a comparison of the modelling results presented in the Preliminary Environmental Impact Report ('PEIR') with those presented in Section 7.4.3 (relevant information has been reproduced in Annex A of AS-009 for ease of comparison purposes). At the PEIR stage, the heights for the gas turbine buildings and HRSG buildings were modelled at 21.3 m and 33.6 m respectively based on preliminary design information that was subsequently updated. For the ES, the gas turbine buildings and HRSG buildings have been modelled at 31 m and 45 m, increases of circa 10 m and 11 m respectively.</p> <p>This difference in height allows a 'sensitivity test' of how the modelling results are influenced by building heights. The building height increase does not lead to any difference in the modelling results (see PEIR Table 7.15 and Table 7.15 of the ES reproduced in Annex A of AS-009). This demonstrates that building downwash effects are negligible for both configurations. This is in line with modelling theory, where building downwash effects are most prominent where the plume is substantially entrained in the building wake either due to stack height and</p>

Ref.	Respondent	Consultee response	Applicant's response
		<p>According to Annex A of Implications of Requested Change on the EIA (IRCE), Doc Ref: 8.3, which replicates building height information from the Preliminary Environmental Impact Report (PEIR) and Environmental Statement (ES), the ES has already modelled environmental impacts using the proposed increased HRSG building height of 45m. Therefore, the applicant has provided environmental impact data for the proposed increase in HRSG height of 1m, and this data suggests there is no change in environmental impact as a result of an increase in the height of the HRSG building from 44m to 45m.</p> <p>Annex A of IRCE shows that the ES has already modelled environmental impacts using a turbine hall building height of 31m. The Rule 17 DCO modification relates to a turbine hall increase from 25m to 32m. Based on the environmental impact information provided for the turbine hall building at 31m, it is reasonable to assume that the proposed 1m increase to the height of the turbine hall is unlikely to cause a significant change in environmental impact. Also, the turbine hall is located further from the stack than the taller HRSG and therefore should be less likely to cause downwash effects.</p> <p>We note that the applicant has presented identical air model results in the PEIR and ES reports, as shown in Annex A of IRCE), for a turbine hall building height of 21.3m in the PEIR and subsequently 31m in the ES. Although, it is possible that the air model results could remain the same for the turbine hall building, there does not appear to be a detailed explanation for why this is the case within the IRCE. This will need to be explained within the DCO documents.</p> <p>We cannot comment further on the environmental impact of the proposed increases in building heights without undertaking a detailed assessment of environmental impact, using the preferred contractor's stack heights, stack diameters, stack location, building locations and designs.</p> <p><u>Noise</u></p> <p>Altering the height of buildings has the potential to channel noise towards new sensitive receptors. During the determination of the Environmental</p>	<p>building height being similar, or very large buildings being present). In this case, the plume rise (due to plume momentum and buoyancy) is sufficient to lift the plume clear of the downwash region in both cases, and therefore not be affected by the change in building heights and dimensions.</p> <p>Therefore, the dispersion modelling undertaken for the ES remains valid and encompasses the envelope of possible plant designs without significant change to the predicted impacts.</p> <p>As noted by the Environment Agency in the Issue Specific Hearing on 13 June 2018, the finalised design will be subject to remodelling as part of the Environmental Permit application. At this point, the dispersion model will be subject to rigorous scrutiny by the Environment Agency Air Quality Modelling and Assessment Unit, and any further discussions required to finalised design will be undertaken at that point in line with Environment Agency requirements.</p> <p><u>Noise</u></p> <p>It is agreed that during the determination of the Environmental Permit, an assessment of the preferred contractor's proposed noise abatement equipment, noise impact assessment and noise monitoring will be conducted. Requirement 19 (Control of noise during operational phase) of the draft DCO [REP2-085] includes that no phase of the authorised development can be commissioned until a written programme for the monitoring and control of noise during the operational phase of that phase of the authorised development has been submitted to and approved by the relevant planning authority (i.e. RCBC) in consultation with the Environment Agency.</p> <p><u>Air Emission Monitoring Platform</u></p>



Ref.	Respondent	Consultee response	Applicant's response
		<p>Permit, an assessment of the preferred contractor's proposed noise abatement equipment, noise impact assessment and noise monitoring will be conducted. We are unable to provide further comments in respect of this matter at the DCO stage.</p> <p><u>Air Emission Monitoring Platform</u></p> <p>We note that the air emissions monitoring platforms on both stacks, have not been shown on the photomontages.</p> <p>In order to demonstrate compliance with the Environmental Permit, the optimum position of the air emissions monitoring points and the air emissions monitoring platform is an integral part of the overall plant design to ensure the applicant can extract a representative sample of their emissions to air, for analysis. We would anticipate that these large platforms will be located approximately half way up each stack.</p> <p>Guidance on the acceptable location of the air monitoring points and the monitoring platform design are held within Technical Guidance Note TGN M1 "Sampling Requirements for Stack Emissions Monitoring".</p> <p>The proposed changes to the DCO application are to increase the height of the HSRG building and turbine hall building. However, the applicant's consultation leaflet does mention that the stacks leading from the gas turbines will be no more than 75m in height and that they will continue to work to see if they can be reduced further. It should be noted that if stack height is reduced, this may reduce air dispersion and therefore adversely affect their Environmental Impact Assessment.</p> <p>In summary, we consider that the proposed changes do not represent a material change to the application. Notwithstanding this, we acknowledge that there may be other issues for example visual appearance and landscape issues, resulting from the proposed changes, which fall outside of our remit to comment upon but could constitute a material change.</p>	<p>It is agreed that air emissions monitoring platforms will be required on both stacks. It should be noted the photomontages are not meant to be a true depiction of the Proposed Development but rather a tool to allow an assessment to be undertaken in accordance with the Landscape Institute and Institute of Environmental Management & Assessment (2013) Guidelines for Landscape and Visual Impact Assessment (Third Edition). . As such the photomontages especially focused on the heights of the stacks and the main structures in order to help understand the likely effects on viewers, taking into consideration other factors such as existing screening and the wider industrial context. Since they are not intended to be a comprehensive image of the Project's detailed design, they did not include minor details. For the avoidance of doubt, the addition of the air emission monitoring platforms would not change the conclusions of the landscape and visual assessment [APP-053].</p>

Document Ref. 8.40
Proposed Non-Material Change – Consultation Report



Ref.	Respondent	Consultee response	Applicant's response
		If you have any questions in respect of the above, please do not hesitate to contact me.	

Proposed Non-Material Change – Consultation Report

5 SUMMARY AND CONCLUSION

- 5.1 The scope of non-statutory consultation carried out by the Applicant was comparable to that recommended for a material change and, on this basis, is considered robust. This is in addition to the consultation of Interested Parties led by the ExA.
- 5.2 A total of 6 responses were received to the ExA led consultation and 7 were received to the Applicant led consultation. Two of the responses were duplicates between the consultation exercises. The responses received were primarily from s42/technical consultees.
- 5.3 The Applicant's analysis indicates that there were 12 neutral responses and only one negative response. The consultees classed as neutral either confirmed that they had no comments to make or that it was accepted that the change is non-material and/or would not contribute to any new or different likely significant environmental effects.
- 5.4 It is considered that the small number of responses (in the context that the Applicant issued in excess of 14,000 letters and leaflets), goes to demonstrate that there was limited interest in the proposed change and that the requested change is in fact not substantial and non-material, and would not contribute to any new or significant environmental impacts.

APPENDIX 1 – CONSULTEE LETTER AND NOTICE

Date: 01 May 2018
PINS Ref: EN010082

[INSERT CONTACT NAME AND ADDRESS]

XXXX
XXXX
XXXX

Dear XXXX,

THE TEES COMBINED CYCLE POWER PLANT PROJECT – CONSULTATION ON PROPOSED NON-MATERIAL CHANGE IN RELATION TO BUILDINGS HEIGHTS

THE PLANNING ACT 2008 (AS AMENDED), THE INFRASTRUCTURE PLANNING (EXAMINATION PROCEDURE) RULES 2010 (AS AMENDED) (RULE 17) AND THE INFRASTRUCTURE PLANNING (ENVIRONMENTAL IMPACT ASSESSMENT) REGULATIONS 2009 (AS AMENDED) (REGULATION 17)

Introduction

Semcorp Utilities (UK) Limited ('SCU' or the 'Applicant') is writing in respect of its application (the 'Application') for a Development Consent Order (a 'DCO'). The Application was accepted for examination by the Secretary of State (the 'SoS') for Business, Energy and Industrial Strategy on 18 December 2017. The Examination began on 10 April 2018.

SCU is seeking a DCO for the construction, operation and maintenance of a new gas-fired electricity generating station with a nominal net electrical output capacity of up to 1,700 megawatts ('MW') at ISO conditions (the 'Project' or 'Proposed Development'), on the site of the former Teesside Power Station, which forms part of the Wilton International Site, Teesside.

Since the Application was submitted in November 2017, SCU has identified that it may be necessary to increase the maximum height of the turbine hall and heat recovery steam generator ('HRSG') building. The heights are greater than those set out in the Application submitted in November 2017 and SCU is therefore proposing a non-material change to the Application.

The proposed increases in building heights do not alter the conclusions of the Environmental Statement ('ES') submitted as part of the Application and would not result in new or different likely significant environmental effects. As such, the proposed changes to building heights are considered to be non-material in nature.

Description of the proposed non-material change

The following non-material change is proposed:

- an increase in the maximum height of the turbine hall from 25 metres ('m') to 32m; and
- an increase in the maximum height of the HRSG building from 44m to 45m.

The turbine hall and HRSG building comprise Work No.1A (a) and Work No. 1A (b) of the draft DCO (Application Document Ref: 2.1). The current maximum heights (25m and 44m respectively) are set out in Schedule 2, Requirement 4 of the draft DCO.

Rationale and need for the proposed non-material change

Prior to the appointment of a contractor, who would provide the components to construct the Proposed Development, it is not possible for the Applicant to fix all of the design details of the Proposed Development. A degree of flexibility is therefore required, as stated in the Design and Access Statement ('DAS') (Application Document Ref: 5.6) submitted as part of the Application.

One of the primary reasons for requiring this flexibility is that different contractors utilise differing sizes and configurations of components and buildings. The 'Rochdale Envelope' approach adopted by the Application seeks to accommodate this flexibility, including the use of maximum heights. Please refer to Environmental Statement ('ES') Volume 1, Chapter 3 'EIA Approach' (Application Document Ref: 6.2.3) for more detail in respect of the Rochdale Envelope applied to assess the Proposed Development.

The Applicant is currently engaged in a tendering process with a number of contractors, with one to be selected once the Proposed Development is consented and prior to construction. Since submission of the Application in November 2017, one of the contractors has identified that it might be necessary to increase the maximum heights of the turbine hall and HRSG buildings, to the dimensions set out above (32m and 45m respectively). This has necessitated the need to request a change to the maximum heights set out within the draft DCO.

The need to maintain this type of flexibility and have the ability to select from a number of contractors is common practice when dealing with energy generation projects. The rationale is both commercial and practical. For instance, it allows the Applicant to select the contractor whose components and technology are best suited to any energy generating contract that is awarded in the future, following any grant of consent to construct and operate the Proposed Development.

Consultation

SCU has produced a package of documents (the 'Consultation Documents') on which comments are sought from consultees. The documents include:

- further information on the need and rationale for the proposed non-material change;
- the approach to determining the materiality of the proposed change;
- an environmental note, setting out an assessment of the proposed non-material change and whether it would generate any new or different likely significant environmental effects; and
- detail of any consequential amendments to documents forming part of the Application.

The Consultation Documents are included on the enclosed CD.

The Consultation Documents are also available to view or download free of charge from the project website: www.tccpp.co.uk. The enclosed Consultation Notice sets out further detail in terms of how the Consultation Document can be viewed, including how to obtain hard copies if required.

Consultees can make comments on the Consultation Documents by post or by sending an email to enquiries@tccpp.co.uk. Again, further information on making comments, including the postal address, is set out in the enclosed Consultation Notice.

Please note that all comments must be received by SCU no later than **11:59pm on 7 June 2018**.

Yours sincerely

Scott Taylor
Sembcorp

Enc.
Consultation Notice
CD of Consultation Documents

The Tees Combined Cycle Power Plant (Tees CCpp) Project (Ref: EN010082)

The Planning Act 2008

The Infrastructure Planning (Examination Procedure) Rules 2010 – Rule 17

The Infrastructure Planning (Environmental Impact Assessment) Regulations 2009

NOTICE OF CONSULTATION ON A PROPOSED NON-MATERIAL CHANGE

1. Notice is hereby given that Sembcorp Utilities UK Limited ('Sembcorp') of PO Box 1985, Wilton International, Middlesbrough, Teesside, TS90 8WS is proposing a non-material change to the Tees Combined Cycle Power Plant (Tees CCpp) Project (the 'Project').
2. The Project comprises the construction, operation and maintenance of a new gas-fired electricity generating station with a nominal net electrical output capacity of up to 1,700 megawatts ('MW') on the site of the former Teesside Power Station, which forms part of the Wilton International Site, Teesside. The site for the Project (the 'Project Site') covers an area of approximately 15 hectares and is located within the south-western part of the Wilton International Site.
3. Sembcorp submitted an application (the 'Application') to the Secretary of State (the 'SoS') for Business, Energy and Industrial Strategy for a Development Consent Order ('DCO') on 22 November 2017 under Section 37 of The Planning Act 2008 (the 'Act') to authorise the construction, operation and maintenance of Project. The Application was accepted for examination by the SoS on 18 December 2017 and the Examination began on 10 April 2018.
4. The Project qualifies as Environmental Impact Assessment ('EIA') development for the purposes of the Infrastructure Planning (Environmental Impact Assessment) Regulations 2009. The Application was therefore accompanied by an Environmental Statement ('ES'), setting out the findings of the EIA.
5. Since the Application was submitted in November 2017, the Applicant has identified that it may be necessary to increase the maximum height of the turbine hall and heat recovery steam generator ('HRSG') building. The heights are greater than those set out in the Application submitted in November 2017.
6. The following non-material change is therefore proposed:
 - increase the maximum height of the turbine hall from 25 metres ('m') to 32m; and
 - increase the maximum height of the HRSG building from 44m to 45m.
7. The above comprise Work No.1A (a) and Work No. 1A (b) of the draft DCO (Application Document Ref: 2.1) submitted as part of the Application. The current maximum heights (25m and 44m respectively) are set out in Schedule 2, Requirement 4 of the draft DCO.
6. Sembcorp has produced a package of documents (the 'Consultation Documents') setting out information on the proposed non-material change, including updated application documents (where necessary). The Consultation Documents are available to view or download free of charge from the project website: www.tccpp.co.uk and for inspection free of charge from **9 May to 7 June 2018** at the following locations during the hours set out (opening hours may be subject to change):

Locations	Opening Times
Lazenby Village Hall, High Street, Lazenby, TS6 8DX	Wednesdays 10am -12noon & 6-8pm
Roseberry Square Library, Roseberry Road, Redcar,	Sunday: closed; Monday: 11:00 - 13:00 & 13:30 - 17:00

Locations	Opening Times
TS10 4NY	Tuesday: 11:00 - 13:00 & 13:30 - 17:00; Wednesday: 10:00 - 13:00 & 13:30 - 15:30; Thursday: 09:00 - 13:00 & 13:30 - 16:00; Friday: 10:00 - 13:00 & 13:30 - 16:00; Saturday: closed
Whale Hill Community Centre, Goathland Road, Middlesbrough, TS6 8AW	Monday - Friday 9am - 3pm
Grangetown Library, Birchington Avenue, Grangetown, TS6 7LS	Sunday: closed; Monday: 09:00 - 17:00; Tuesday: closed; Wednesday: 10:00 - 17:00; Thursday: 10:00 - 16:00; Friday: 10:00 - 17:00; Saturday: 09:30 - 12:30
Dormanstown Library, 3 Farndale Square, Redcar, TS10 5HQ	Sunday: closed; Monday: closed; Tuesday: 09:30 - 12:15 & 12:45 - 17:00; Wednesday: closed; Thursday: closed; Friday: 09:30 - 12:15 & 12:45 - 17:00; Saturday: closed
South Bank Library, Low Grange Health Village, Normanby Road, South Bank, Middlesbrough, TS6 6TD	Sunday: closed; Monday: 09:00 - 18:00; Tuesday: 09:00 - 18:00; Wednesday: 09:00 - 17:00; Thursday: 09:00 - 18:00; Friday: 09:00 - 18:00; Saturday: 09:00 - 12:30
Marske Library, Windy Hill Lane, Marske, Redcar, TS11 7BL	Sunday: closed; Monday: 09:00 - 17:00; Tuesday: 10:00 - 16:00; Wednesday: 10:00 - 17:00; Thursday: closed; Friday: 10:00 - 17:00; Saturday: 09:30 - 12:30
Redcar Library, Redcar & Cleveland House, Kirkleatham Street, Redcar, TS10 1RT	Sunday: closed; Monday: 09:00 - 18:00; Tuesday: 09:00 - 18:00; Wednesday: 09:00 - 18:00; Thursday: 09:00 - 17:00; Friday: 09:00 - 18:00; Saturday: 09:30 - 12:30
Middlesbrough Central Library, Centre Square, Middlesbrough, TS1 2AY	Monday 9:30am - 7pm; Tuesday 9:30am - 7pm; Wednesday 9:30am - 5pm; Thursday 9:30am - 7pm; Friday 9:30am - 5pm; Saturday 9:30am - 5pm; Sunday closed
Stockton Central Library, Church Road, Stockton, TS18 1TU	Monday, Wednesday & Friday 8.30am - 6pm; Tuesday & Thursday 8.30am - 8pm; Saturday 9.30am - 4pm; Sunday closed
Hartlepool Central Library, 124 York Road, Hartlepool, TS26 9DE	Monday to Friday 10am - 6pm; Saturday 10am - 2pm; Sunday closed
Northallerton Library, 1 Thirsk Road, Northallerton, DL6 1PT	Monday 9:30am - 6pm; Tuesday 9:30am - 5pm; Wednesday 9:30am - 6pm; Thursday 1pm - 5pm; Friday 9:30am - 5pm; Saturday 9.30am - 1.30pm; Sunday closed
Scarborough Library, Vernon Road, Scarborough, YO11 2NN	Monday 9am - 6pm; Tuesday 9am - 6pm; Wednesday 10am - 6pm; Thursday 9am - 8pm; Friday 9am - 6pm; Saturday 9am - 5pm; Sunday 11am - 4pm
Darlington Library, Crown Street, Darlington, DL1 1ND	Monday 9am - 6pm; Tuesday 9am - 6pm; Wednesday 9am - 5pm; Thursday 10am - 6pm; Friday 9am - 5pm; Saturday 9am - 4pm; Sunday closed

7. A hard copy of all the Consultation Documents is available on request for a maximum copying charge of £50.00. Hard copies of individual documents are also available on request. A CD of the documents is available on request for a charge of £15.00. The documents (or a CD) can be obtained by writing to: **Tees Combined Cycle Power Plant Project, c/o Sembcorp Utilities UK Limited, PO Box 1985, Wilton International, Middlesbrough, Teesside, TS90 8WS.**
8. If you wish to respond to this notice, or make representations in respect of the proposed non-material change, these should be sent to Sembcorp. Please include your name and an address where any correspondence relating to the Project can be sent. Representations may be submitted in the following ways:
- Post:** Tees Combined Cycle Power Plant Project, c/o Sembcorp Utilities UK Limited, PO Box 1985, Wilton International, Middlesbrough, Teesside, TS90 8WS
- E-mail:** enquiries@tccpp.co.uk
9. Your comments will be analysed by Sembcorp and copies will be made available in due course to the Secretary of State, the Planning Inspectorate and other relevant parties involved in the DCO process. We

will request that your personal details are not placed on public record and these will be held securely by Sembcorp in accordance with the Data Protection Act 1998.

10. Please note that all responses must be received by Sembcorp no later than **11:59pm on 7 June 2018**.

Sembcorp Utilities UK Limited

APPENDIX 2 – CONSULTEE LEAFLET AND NOTICE

Tees Combined Cycle Power Plant



Information on requested non-material change to proposed gas-fired power station on the Wilton International site

You may recall that last summer, Sembcorp Utilities UK, the energy provider to the manufacturing firms at Wilton International, leafleted around 14,000 households around the site on a proposal to build a new gas-fired power station on the plot once occupied by the former Teesside Power Station.

The leaflet promoted a series of public exhibitions that took place at various locations during July 2017 and also highlighted a website tccpp.co.uk by which people could submit written feedback on the project. Copies of key documents were placed in public libraries closest to the site and public notices were placed in the Gazette and other newspapers.

The Tees Combined Cycle Power Plant (Tees CCPP) is a project with the potential to create up to 1,700 megawatts of electrical power – enough to meet the requirements of future investors on the site or contribute to the power needs of around 5 million people.

Categorised as a Nationally Significant Infrastructure Project, it requires the ultimate approval of the Secretary of State for Business, Energy and Industrial Strategy.

On November 22nd 2017, written feedback from these consultations plus 3,000 pages of other important environmental and technical information relating to the project was submitted to Government via the Planning Inspectorate in the form of an application for a Development Consent Order (DCO).

This DCO Application was formally accepted by the Secretary of State for further detailed scrutiny on 18th December 2017 and earlier this year an independent inspector, known as the Examining Authority, was appointed to carry out this task.

This formal process, which can last up to 6 months, began on April 10th 2018 when the Examining Authority requested that we make the public aware of a requested change to one aspect of the development that came to light after the submission of the DCO Application.

Sembcorp is currently selecting between four

potential providers of this type of gas turbine technology and one of the four contractor companies tendering for the work has identified that it might be necessary to increase the maximum height of the turbine hall and the heat recovery steam generator buildings from 25 metres to 32 metres and 44 metres to 45 metres respectively to accommodate components. This has necessitated the need to request a change to the maximum heights that may be required as stated in the DCO Application.

Figure 1 shows how this increase would look as viewed from the village of Lazenby versus

the information previously supplied in the DCO Application. Please note that any such change would not alter the conclusions of the Environment Statement (ES) submitted as part of the DCO Application and there would be no new or different likely significant environmental effects.

Since completing the ES, we can also now confirm that the stacks leading from the gas turbines will be no more than 75m in height (at the time of the consultation we were of a view that they might need to be higher) and we will continue to work to see if they can be reduced further. Figure 1 also shows this reduction in context.

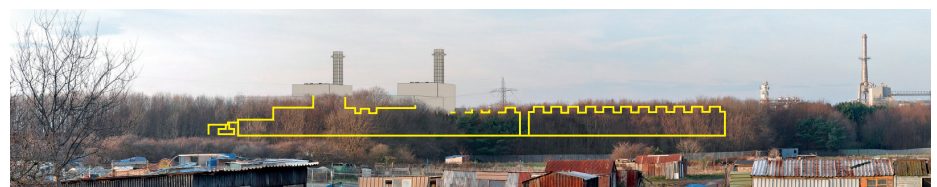
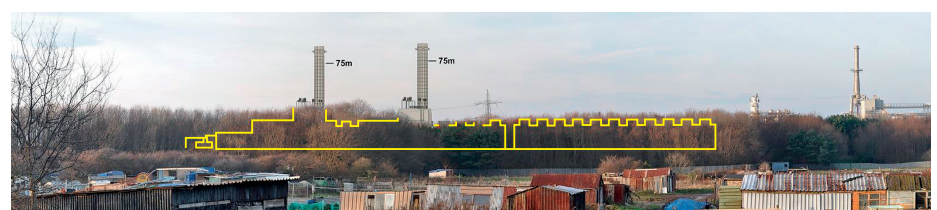


Figure 1 View from Lazenby Allotments showing increased building heights plus reduced stack



Previous view from same location view showing alternative building heights

Sembcorp has produced a package of documents with information on this proposed non-material change which are available to view or download free from the project website www.tccpp.co.uk and at libraries throughout the borough.

People who wish to comment on these proposed building height changes via post or email need to do so by the end of 7th June 2018.

POST - Tees Combined Cycle Power Plant, c/o Sembcorp Utilities UK Limited, PO Box 1985, Wilton International, Middlesbrough TS90 8WS

Email - enquiries@tccpp.co.uk

Any comments submitted will be made available to the Secretary of State, the Planning Inspectorate and other relevant parties involved in the process and we will request that personal details are not placed on public record and will be held securely by Sembcorp in accordance with the Data Protection Act 1998.

All relevant documents relating to the project are also available via the Planning Inspectorate website <https://infrastructure.planninginspectorate.gov.uk/projects/north-east/tees-ccpp/>

THE TEES COMBINED CYCLE POWER PLANT (TEES CCPP) PROJECT (REF: EN010082)

THE PLANNING ACT 2008

THE INFRASTRUCTURE PLANNING (EXAMINATION PROCEDURE) RULES 2010 – RULE 17

THE INFRASTRUCTURE PLANNING (ENVIRONMENTAL IMPACT ASSESSMENT) REGULATIONS 2009 – REGULATION 17

NOTICE OF CONSULTATION ON A PROPOSED NON-MATERIAL CHANGE

- Notice is hereby given that Sembcorp Utilities UK Limited ('Sembcorp') of PO Box 1985, Wilton International, Middlesbrough, TS90 8WS is proposing a non-material change to the Tees Combined Cycle Power Plant (Tees CCPP) Project (the 'Project').
- The Project comprises the construction, operation and maintenance of a new gas-fired electricity generating station with a nominal net electrical output capacity of up to 1,700 megawatts ('MW') on the site of the former Teesside Power Station, which forms part of the Wilton International Site, Middlesbrough. The site for the Project (the 'Project Site') covers an area of approximately 15 hectares and is located within the south-western part of the Wilton International Site.
- Sembcorp submitted an application (the 'Application') to the Secretary of State (the 'SoS') for Business, Energy and Industrial Strategy for a Development Consent Order ('DCO') on 22 November 2017 under Section 37 of The Planning Act 2008 (the 'Act') to authorise the construction, operation and maintenance of the Project. The Application was accepted for examination by the SoS on 18 December 2017 and the Examination began on 10 April 2018.
- The Project qualifies as Environmental Impact Assessment ('EIA') development for the purposes of the Infrastructure Planning (Environmental Impact Assessment) Regulations 2009. The Application was therefore accompanied by an Environmental Statement ('ES'), setting out the findings of the EIA.
- Since the Application was submitted in November 2017, the Applicant has identified that it may be necessary to increase the maximum height of the turbine hall and heat recovery steam generator ('HRSG') building. The heights are greater than those set out in the Application submitted in November 2017.
- The following non-material change is therefore proposed:
 - increase the maximum height of the turbine hall from 25 metres ('m') to 32m; and
 - increase the maximum height of the HRSG building from 44m to 45m.
- The above comprise Work No.1A (a) and Work No. 1A (b) of the draft DCO (Application Document Ref: 2.1) submitted as part of the Application. The current maximum heights (25m and 44m respectively) are set out in Schedule 2, Requirement 4 of the draft DCO.
- Sembcorp has produced a package of documents (the 'Consultation Documents') setting out information on the proposed non-material change, including updated application documents (where necessary). The Consultation Documents are available to view or download free of charge from the project website: www.tccpp.co.uk and for inspection free of charge from **9 May to 7 June 2018** at the following locations during the hours set out (opening hours may be subject to change):
- A hard copy of all the Consultation Documents is available on request for a maximum copying charge of £50.00. Hard copies of individual documents are also available on request. A CD of the documents is available on request for a charge of £15.00. The documents (or a CD) can be obtained by writing to: **Tees Combined Cycle Power Plant Project, c/o Sembcorp Utilities UK Limited, PO Box 1985, Wilton International, Middlesbrough, TS90 8WS.**
- If you wish to respond to this notice, or make representations in respect of the proposed non-material change, these should be sent to Sembcorp. Please include your name and an address where any correspondence relating to the Project can be sent. Representations may be submitted in the following ways:

Post: Tees Combined Cycle Power Plant Project, c/o Sembcorp Utilities UK Limited, PO Box 1985, Wilton International, Middlesbrough, TS90 8WS

E-mail: enquiries@tccpp.co.uk
- Your comments will be analysed by Sembcorp and copies will be made available in due course to the Secretary of State, the Planning Inspectorate and other relevant parties involved in the DCO process. We will request that your personal details are not placed on public record and these will be held securely by Sembcorp in accordance with the Data Protection Act 1998.
- Please note that all responses must be received by Sembcorp no later than **11:59pm on 7 June 2018.**

Location	Opening Times		
Lazenby Village Hall, High Street, Lazenby, TS6 8DX	Wednesdays 10am -12noon & 6-8pm		
Roseberry Library, 25K Centre, Ayrton Rd, Redcar, TS10 4EW	Monday 11:00 to 13:00 and 13:30 to 17:00 Thursday 09:00 to 13:00 and 13:30 to 16:00	Tuesday 11:00 to 13:00 and 13:30 to 17:00 Friday 10:00 to 13:00 and 13:30 to 16:00	Wednesday 10:00 to 13:00 and 13:30 to 15:30 Saturday closed Sunday closed
Whale Hill Community Centre, Goathland Road, Middlesbrough, TS6 8AW	Monday - Friday 9am - 3pm		
Grangetown Library, Birchington Avenue, Grangetown, TS6 7LS	Monday 09:00 to 17:00 Thursday 10:00 to 16:00	Tuesday closed Friday 10:00 to 17:00	Wednesday 10:00 to 17:00 Saturday 09:00 to 12:30 Sunday closed
Dormantown Library, 3 Farndale Square, Redcar, TS10 5HQ	Monday closed Friday 09:30 to 12:15 and 12:45 to 17:00	Tuesday 9:30 to 12:15 and 12:45 to 17:00 Saturday closed	Wednesday closed Sunday closed Thursday closed
South Bank Library, Low Grange Health Village, Normanby Road, South Bank, Middlesbrough, TS6 6TD	Monday 09:00 to 18:00 Thursday 09:00 to 18:00	Tuesday 09:00 to 18:00 Friday 09:00 to 18:00	Wednesday 09:00 to 17:00 Saturday 09:00 to 12:30 Sunday closed
Marske Library, Windy Hill Lane, Marske, Redcar, TS11 7BL	Monday 09:00 to 17:00 Thursday closed	Tuesday 10:00 to 16:00 Friday 10:00 to 17:00	Wednesday 10:00 to 17:00 Saturday 09:30 to 12:30 Sunday closed
Redcar Library, Redcar & Cleveland House, Kirkleatham Street, Redcar, TS10 1RT	Monday 9am - 6pm Thursday 9am - 5pm	Tuesday 9am - 6pm Friday 9am - 6pm	Wednesday 9am - 6pm Saturday 9:30am - 12:30pm Sunday closed
Middlesbrough Central Library, Centre Square, Middlesbrough, TS1 2AY	Monday 9:30am - 7pm Thursday 9:30am - 7pm	Tuesday 9:30am - 7pm Friday 9:30am - 5pm	Wednesday 9:30am - 5pm Saturday 9:30am - 5pm Sunday closed
Stockton Central Library, Church Road, Stockton, TS18 1TU	Monday, Wednesday and Friday: 8.30am to 6pm	Tuesday and Thursday: 8.30am to 8pm	Saturday: 9.30am to 4pm Sunday Closed
Hartlepool Central Library, 124 York Road, Hartlepool, TS26 9DE	Monday to Friday 10am to 6pm	Saturday 10am to 2pm	Sunday Closed
Northallerton Library, 1 Thirsk Road, Northallerton, DL6 1PT	Monday 9.30am to 6pm Thursday 1pm to 5pm	Tuesday 9.30am to 5pm Friday 9.30am to 5pm	Wednesday 9.30am to 6pm Saturday 9.30am to 1.30pm Sunday Closed
Scarborough Library, Vernon Road, Scarborough, YO11 2NN	Monday 9am to 6pm Thursday 9am to 7pm	Tuesday 9am to 6pm Friday 9am to 6pm	Wednesday 10am to 6pm Saturday 9am to 3pm Sunday Closed
Darlington Library, Crown Street, Darlington, DL1 1ND	Monday 9am to 6pm Thursday 10am to 6pm	Tuesday 9am to 6pm Friday 9am to 5pm	Wednesday 9am to 5pm Saturday 9am to 4pm Sunday Closed

The Tees Combined Cycle Power Plant (Tees CCpp) Project (Ref: EN010082)

The Planning Act 2008

The Infrastructure Planning (Examination Procedure) Rules 2010 – Rule 17

The Infrastructure Planning (Environmental Impact Assessment) Regulations 2009

NOTICE OF CONSULTATION ON A PROPOSED NON-MATERIAL CHANGE

1. Notice is hereby given that Sembcorp Utilities UK Limited ('Sembcorp') of PO Box 1985, Wilton International, Middlesbrough, Teesside, TS90 8WS is proposing a non-material change to the Tees Combined Cycle Power Plant (Tees CCpp) Project (the 'Project').
2. The Project comprises the construction, operation and maintenance of a new gas-fired electricity generating station with a nominal net electrical output capacity of up to 1,700 megawatts ('MW') on the site of the former Teesside Power Station, which forms part of the Wilton International Site, Teesside. The site for the Project (the 'Project Site') covers an area of approximately 15 hectares and is located within the south-western part of the Wilton International Site.
3. Sembcorp submitted an application (the 'Application') to the Secretary of State (the 'SoS') for Business, Energy and Industrial Strategy for a Development Consent Order ('DCO') on 22 November 2017 under Section 37 of The Planning Act 2008 (the 'Act') to authorise the construction, operation and maintenance of Project. The Application was accepted for examination by the SoS on 18 December 2017 and the Examination began on 10 April 2018.
4. The Project qualifies as Environmental Impact Assessment ('EIA') development for the purposes of the Infrastructure Planning (Environmental Impact Assessment) Regulations 2009. The Application was therefore accompanied by an Environmental Statement ('ES'), setting out the findings of the EIA.
5. Since the Application was submitted in November 2017, the Applicant has identified that it may be necessary to increase the maximum height of the turbine hall and heat recovery steam generator ('HRSG') building. The heights are greater than those set out in the Application submitted in November 2017.
6. The following non-material change is therefore proposed:
 - increase the maximum height of the turbine hall from 25 metres ('m') to 32m; and
 - increase the maximum height of the HRSG building from 44m to 45m.
7. The above comprise Work No.1A (a) and Work No. 1A (b) of the draft DCO (Application Document Ref: 2.1) submitted as part of the Application. The current maximum heights (25m and 44m respectively) are set out in Schedule 2, Requirement 4 of the draft DCO.
6. Sembcorp has produced a package of documents (the 'Consultation Documents') setting out information on the proposed non-material change, including updated application documents (where necessary). The Consultation Documents are available to view or download free of charge from the project website: www.tccpp.co.uk and for inspection free of charge from **9 May to 7 June 2018** at the following locations during the hours set out (opening hours may be subject to change):

Locations	Opening Times
Lazenby Village Hall, High Street, Lazenby, TS6 8DX	Wednesdays 10am -12noon & 6-8pm
Roseberry Square Library, Roseberry Road, Redcar,	Sunday: closed; Monday: 11:00 - 13:00 & 13:30 - 17:00

Locations	Opening Times
TS10 4NY	Tuesday: 11:00 - 13:00 & 13:30 - 17:00; Wednesday: 10:00 - 13:00 & 13:30 - 15:30; Thursday: 09:00 - 13:00 & 13:30 - 16:00; Friday: 10:00 - 13:00 & 13:30 - 16:00; Saturday: closed
Whale Hill Community Centre, Goathland Road, Middlesbrough, TS6 8AW	Monday - Friday 9am - 3pm
Grangetown Library, Birchington Avenue, Grangetown, TS6 7LS	Sunday: closed; Monday: 09:00 - 17:00; Tuesday: closed; Wednesday: 10:00 - 17:00; Thursday: 10:00 - 16:00; Friday: 10:00 - 17:00; Saturday: 09:30 - 12:30
Dormanstown Library, 3 Farndale Square, Redcar, TS10 5HQ	Sunday: closed; Monday: closed; Tuesday: 09:30 - 12:15 & 12:45 - 17:00; Wednesday: closed; Thursday: closed; Friday: 09:30 - 12:15 & 12:45 - 17:00; Saturday: closed
South Bank Library, Low Grange Health Village, Normanby Road, South Bank, Middlesbrough, TS6 6TD	Sunday: closed; Monday: 09:00 - 18:00; Tuesday: 09:00 - 18:00; Wednesday: 09:00 - 17:00; Thursday: 09:00 - 18:00; Friday: 09:00 - 18:00; Saturday: 09:00 - 12:30
Marske Library, Windy Hill Lane, Marske, Redcar, TS11 7BL	Sunday: closed; Monday: 09:00 - 17:00; Tuesday: 10:00 - 16:00; Wednesday: 10:00 - 17:00; Thursday: closed; Friday: 10:00 - 17:00; Saturday: 09:30 - 12:30
Redcar Library, Redcar & Cleveland House, Kirkleatham Street, Redcar, TS10 1RT	Sunday: closed; Monday: 09:00 - 18:00; Tuesday: 09:00 - 18:00; Wednesday: 09:00 - 18:00; Thursday: 09:00 - 17:00; Friday: 09:00 - 18:00; Saturday: 09:30 - 12:30
Middlesbrough Central Library, Centre Square, Middlesbrough, TS1 2AY	Monday 9:30am - 7pm; Tuesday 9:30am - 7pm; Wednesday 9:30am - 5pm; Thursday 9:30am - 7pm; Friday 9:30am - 5pm; Saturday 9:30am - 5pm; Sunday closed
Stockton Central Library, Church Road, Stockton, TS18 1TU	Monday, Wednesday & Friday 8.30am - 6pm; Tuesday & Thursday 8.30am - 8pm; Saturday 9.30am - 4pm; Sunday closed
Hartlepool Central Library, 124 York Road, Hartlepool, TS26 9DE	Monday to Friday 10am - 6pm; Saturday 10am - 2pm; Sunday closed
Northallerton Library, 1 Thirsk Road, Northallerton, DL6 1PT	Monday 9:30am - 6pm; Tuesday 9:30am - 5pm; Wednesday 9:30am - 6pm; Thursday 1pm - 5pm; Friday 9:30am - 5pm; Saturday 9.30am - 1.30pm; Sunday closed
Scarborough Library, Vernon Road, Scarborough, YO11 2NN	Monday 9am - 6pm; Tuesday 9am - 6pm; Wednesday 10am - 6pm; Thursday 9am - 8pm; Friday 9am - 6pm; Saturday 9am - 5pm; Sunday 11am - 4pm
Darlington Library, Crown Street, Darlington, DL1 1ND	Monday 9am - 6pm; Tuesday 9am - 6pm; Wednesday 9am - 5pm; Thursday 10am - 6pm; Friday 9am - 5pm; Saturday 9am - 4pm; Sunday closed

7. A hard copy of all the Consultation Documents is available on request for a maximum copying charge of £50.00. Hard copies of individual documents are also available on request. A CD of the documents is available on request for a charge of £15.00. The documents (or a CD) can be obtained by writing to: **Tees Combined Cycle Power Plant Project, c/o Sembcorp Utilities UK Limited, PO Box 1985, Wilton International, Middlesbrough, Teesside, TS90 8WS.**
8. If you wish to respond to this notice, or make representations in respect of the proposed non-material change, these should be sent to Sembcorp. Please include your name and an address where any correspondence relating to the Project can be sent. Representations may be submitted in the following ways:
- Post:** Tees Combined Cycle Power Plant Project, c/o Sembcorp Utilities UK Limited, PO Box 1985, Wilton International, Middlesbrough, Teesside, TS90 8WS
- E-mail:** enquiries@tccpp.co.uk
9. Your comments will be analysed by Sembcorp and copies will be made available in due course to the Secretary of State, the Planning Inspectorate and other relevant parties involved in the DCO process. We

will request that your personal details are not placed on public record and these will be held securely by Sembcorp in accordance with the Data Protection Act 1998.

10. Please note that all responses must be received by Sembcorp no later than **11:59pm on 7 June 2018**.

Sembcorp Utilities UK Limited

APPENDIX 3 – INSPECTION LOCATIONS

Lazenby Village Hall,
High Street,
Lazenby,
TS6 8DX

Roseberry Library,
25K Centre,
Ayton Rd,
Redcar,
TS10 4EW

Whale Hill Community Centre,
Goathland Road,
Middlesbrough,
TS6 8AW

Grangetown Library,
Birchington Avenue,
Grangetown,
TS6 7LS

Dormanstown Library,
3 Farndale Square,
Redcar,
TS10 5HQ

South Bank Library,
Low Grange Health Village,
Normanby Road,
South Bank,
Middlesbrough,
TS6 6TD

Marske Library,
Windy Hill Lane,
Marske,
Redcar,
TS11 7BL

Proposed Non-Material Change – Consultation Report

Redcar Library,
Redcar & Cleveland House,
Kirkleatham Street,
Redcar,
TS10 1RT

Middlesbrough Central Library,
Centre Square,
Middlesbrough,
TS1 2AY

Stockton Central Library,
Church Road,
Stockton,
TS18 1TU

Hartlepool Central Library,
124 York Road,
Hartlepool,
TS26 9DE

Northallerton Library,
1 Thirsk Road,
Northallerton,
DL6 1PT

Scarborough Library,
Vernon Road, Scarborough,
YO11 2NN

Darlington Library,
Crown Street,
Darlington, DL1 1ND

APPENDIX 4 – NEWSPAPER NOTICES

The Gazette



gazettelive.co.uk

TRUSTED NEWS SINCE 1869

Tuesday, May 1, 2018

75p



THE BOYS ARE BACK IN TOWN

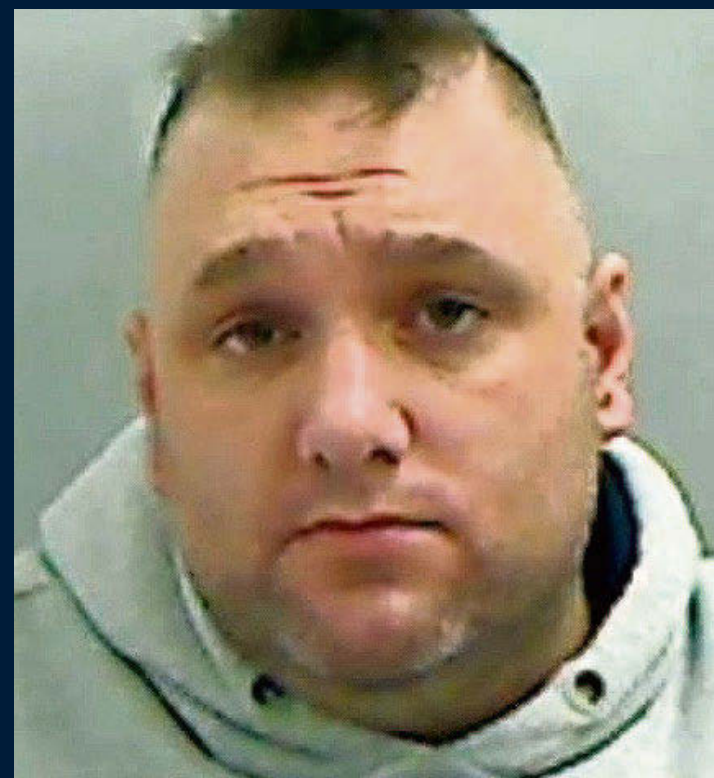
PAGE 3



SUNDAY CUP JOY FOR HARDWICK

PAGES 50&51

BROTHERS AT LARGE



PAIR WANTED IN CONNECTION WITH £1M LOTTERY SCAM ON DISABLED WOMAN MAY HAVE FLED UK PAGE 6



OUR BIT OF BORO IN BENDIORM

PAGE 13



TEAM IN FORM AT RIGHT TIME

PAGE 55



8-PAGE PUZZLES PULL-OUT

Business

Legal Notices

The Tees Combined Cycle Power Plant (Tees CCGP) Project (Ref: EN010082)
The Planning Act 2008
The Infrastructure Planning (Examination Procedure) Rules 2010 - Rule 17
The Infrastructure Planning (Environmental Impact Assessment) Regulations 2009 - Regulation 17
NOTICE OF CONSULTATION ON A PROPOSED NON-MATERIAL CHANGE



- Notice is hereby given that Sembcorp Utilities UK Limited ('Sembcorp') of PO Box 1985, Wilton International, Middlesbrough, TS90 8WS is proposing a non-material change to the Tees Combined Cycle Power Plant (Tees CCGP) Project (the 'Project').
- The Project comprises the construction, operation and maintenance of a new gas-fired electricity generating station with a nominal net electrical output capacity of up to 1,700 megawatts ('MW') on the site of the former Teesside Power Station, which forms part of the Wilton International Site, Middlesbrough. The site for the Project (the 'Project Site') covers an area of approximately 15 hectares and is located within the south-western part of the Wilton International Site.
- Sembcorp submitted an application (the 'Application') to the Secretary of State (the 'SoS') for Business, Energy and Industrial Strategy for a Development Consent Order ('DCO') on 22 November 2017 under Section 37 of The Planning Act 2008 (the 'Act') to authorise the construction, operation and maintenance of the Project. The Application was accepted for examination by the SoS on 18 December 2017 and the Examination began on 10 April 2018.
- The Project qualifies as Environmental Impact Assessment ('EIA') development for the purposes of the Infrastructure Planning (Environmental Impact Assessment) Regulations 2009. The Application was therefore accompanied by an Environmental Statement ('ES'), setting out the findings of the EIA.
- Since the Application was submitted in November 2017, the Applicant has identified that it may be necessary to increase the maximum height of the turbine hall and heat recovery steam generator ('HRSG') building. The heights are greater than those set out in the Application submitted in November 2017.
- The following non-material change is therefore proposed:
 - increase the maximum height of the turbine hall from 25 metres ('m') to 32m; and
 - increase the maximum height of the HRSG building from 44m to 45m.
- The above comprise Work No. 1A (a) and Work No. 1A (b) of the draft DCO (Application Document Ref: 2.1) submitted as part of the Application. The current maximum heights (25m and 44m respectively) are set out in Schedule 2, Requirement 4 of the draft DCO.
- Sembcorp has produced a package of documents (the 'Consultation Documents') setting out information on the proposed non-material change, including updated application documents (where necessary). The Consultation Documents are available to view or download free of charge from the project website: www.tccpp.co.uk and for inspection free of charge from **9 May to 7 June 2018** at the following locations during the hours set out (opening hours may be subject to change):

Locations	Opening Times
Lazenby Village Hall, High Street, Lazenby, TS6 8DX	Wednesdays 10am - 12noon & 6-8pm
Roseberry Library, 25K Centre, Ayton Rd, Redcar TS10 4EW	Sunday: closed; Monday: 11:00 - 13:00 & 13:30 - 17:00 Tuesday: 11:00 - 13:00 & 13:30 - 17:00; Wednesday: 10:00 - 13:00 & 13:30 - 15:30; Thursday: 09:00 - 13:00 & 13:30 - 16:00; Friday: 10:00 - 13:00 & 13:30 - 16:00; Saturday: closed
Whale Hill Community Centre, Goathland Road, Middlesbrough, TS6 8AW	Monday - Friday 9am - 3pm
Grangetown Library, Birchington Avenue, Grangetown, TS6 7LS	Sunday: closed; Monday: 09:00 - 17:00; Tuesday: closed; Wednesday: 10:00 - 17:00; Thursday: 10:00 - 16:00; Friday: 10:00 - 17:00; Saturday: 09:30 - 12:30
Dormanstown Library, 3 Fardale Square, Redcar, TS10 5HQ	Sunday: closed; Monday: closed; Tuesday: 09:30 - 12:15 & 12:45 - 17:00; Wednesday: closed; Thursday: closed; Friday: 09:30 - 12:15 & 12:45 - 17:00; Saturday: closed
South Bank Library, Low Grange Health Village, Normanby Road, South Bank, Middlesbrough, TS6 6TD	Sunday: closed; Monday: 09:00 - 18:00; Tuesday: 09:00 - 18:00; Wednesday: 09:00 - 17:00; Thursday: 09:00 - 18:00; Friday: 09:00 - 18:00; Saturday: 09:00 - 12:30
Marske Library, Windy Hill Lane, Marske, Redcar, TS11 7BL	Sunday: closed; Monday: 09:00 - 17:00; Tuesday: 10:00 - 16:00 Wednesday: 10:00 - 17:00; Thursday: closed; Friday: 10:00 - 17:00 Saturday: 09:30 - 12:30
Redcar Library, Redcar & Cleveland House, Kirkleatham Street, Redcar, TS10 1RT	Sunday: closed; Monday: 09:00 - 18:00; Tuesday: 09:00 - 18:00; Wednesday: 09:00 - 18:00; Thursday: 09:00 - 17:00; Friday: 09:00 - 18:00; Saturday: 09:30 - 12:30
Middlesbrough Central Library, Centre Square, Middlesbrough, TS1 2AY	Monday 9:30am - 7pm; Tuesday 9:30am - 7pm; Wednesday 9:30am - 5pm; Thursday 9:30am - 7pm; Friday 9:30am - 5pm; Saturday 9:30am - 5pm; Sunday closed
Stockton Central Library, Church Road, Stockton, TS18 1TU	Monday, Wednesday & Friday 8.30am - 6pm; Tuesday & Thursday 8.30am - 8pm; Saturday 9.30am - 4pm; Sunday closed
Hartlepool Central Library, 124 York Road, Hartlepool, TS26 9DE	Monday to Friday 10am - 6pm; Saturday 10am - 2pm; Sunday closed
Northhallerton Library, 1 Thirsk Road, Northhallerton, DL6 1PT	Monday 9:30am - 6pm; Tuesday 9:30am - 5pm; Wednesday 9:30am - 6pm; Thursday 1pm - 5pm; Friday 9:30am - 5pm; Saturday 9.30am - 1.30pm; Sunday closed
Scarborough Library, Vernon Road, Scarborough, YO11 2NN	Monday 9am - 6pm; Tuesday 9am - 6pm; Wednesday 10am - 6pm; Thursday 9am - 8pm; Friday 9am - 6pm; Saturday 9am - 5pm; Sunday 11am - 4pm
Darlington Library, Crown Street, Darlington, DL1 1ND	Monday 9am - 6pm; Tuesday 9am - 6pm; Wednesday 9am - 5pm; Thursday 10am - 6pm; Friday 9am - 5pm; Saturday 9am - 4pm; Sunday closed

- A hard copy of all the Consultation Documents is available on request for a maximum copying charge of £50.00. Hard copies of individual documents are also available on request. A CD of the documents is available on request for a charge of £15.00. The documents (or a CD) can be obtained by writing to: **Tees Combined Cycle Power Plant Project, c/o Sembcorp Utilities UK Limited, PO Box 1985, Wilton International, Middlesbrough, TS90 8WS.**
- If you wish to respond to this notice, or make representations in respect of the proposed non-material change, these should be sent to Sembcorp. Please include your name and an address where any correspondence relating to the Project can be sent. Representations may be submitted in the following ways:
Post: Tees Combined Cycle Power Plant Project, c/o Sembcorp Utilities UK Limited, PO Box 1985, Wilton International, Middlesbrough, TS90 8WS
E-mail: enquiries@tccpp.co.uk
- Your comments will be analysed by Sembcorp and copies will be made available in due course to the Secretary of State, the Planning Inspectorate and other relevant parties involved in the DCO process. We will request that your personal details are not placed on public record and these will be held securely by Sembcorp in accordance with the Data Protection Act 1998.
- Please note that all responses must be received by Sembcorp no later than **11:59pm on 7 June 2018.**
Sembcorp Utilities UK Limited

Public Notices

GAZETTE MEDIA COMPANY

CONDITIONS OF ACCEPTANCE OF ADVERTISEMENTS (Abbreviated Form Only)

The publishers reserve the right to decline any copy or artwork of which they may not approve whether an order has been accepted or not. Guarantee of insertion cannot be given and no responsibility is accepted.

- (a) for damage to or loss of artwork
- (b) for shrinkage
- (c) for any loss or damage caused by an error or inaccuracy in the printing
- (d) for the omission of any advertisement
- (e) for any loss or damage in forwarding replies to Box Numbers, however caused.

Should the rate of advertisements be altered, the price for the remaining insertions shall be revised accordingly, or the publishers have the option of cancelling the unexpired portion of the order. Once an advertisement has been accepted for publication and has been processed, a charge will be made for the first insertion, regardless of its appearance in the newspaper. The publisher regrets it cannot accept responsibility for more than ONE INCORRECT insertion, and all quoted prices can only be approximate. Box Numbers may be used only for personal and recruitment advertisements. Any advertisement not booked by a monthly account customer will be subject to a surcharge of 10% on the cost of the advertisement if the invoice is not paid within 14 days of invoice date. In the event of payment not being received within the agreed period allowed for credit the publisher reserves the right to charge and the advertiser will pay interest at the rate of 2% above the base rate of Barclays Bank PLC for each month that payment is overdue. The unabbreviated conditions of acceptance are available on request from the advertisement manager. Copies are also available at all our Branch Offices. Your calls may be monitored or recorded for training purposes. Gazette Media Company Ltd will use this information, and any other details from future advertising, for administration and analysis. We may share your information with other Trinity Mirror group companies or carefully selected third parties. We, or they, may send you details of other goods and services which may be of interest to you. The information may be provided by letter, telephone or other reasonable means of communication. If you do not want your details to be shared with carefully selected third parties, please write to Data Control, FREEPOST, NEA 1676, Newcastle, NE1 1BR or advise your advertising representative. The service you are requesting may require Gazette Media Company Ltd to carry out a credit search at a credit referencing agency which will record the fact that a search has been made. We may need to share your information with other lenders and credit reference agencies. However, we will only use the information from these searches to make credit-granting decisions and, if necessary, for fraud prevention or tracing debtors.

BOOK ONLINE and save time

Property

Property Wanted

This classification is sponsored by **PROPERTY WANTED**
 All houses/shops Anything considered
01642 255555
PRICE RIGHT PROPERTIES

PROPERTIES WANTED IN any area any condition 7 day completion
 07733244444

WHY NOT? Book online

goodmove
We buy any house!

Rated **4.9/5** stars on Reviews.co.uk

WE BUY HOUSES FOR CASH

- ✓ Sell in days - or in your timescale
- ✓ No fees & no obligation
- ✓ Any condition or location
- ✓ NABP approved & RICS regulated

GET UP TO £30,000 CASH ADVANCE

BEST PRICE PAID

Call us **FREE** today for a cash offer available 24/7
0800 031 9071

goodhousemove.co.uk

Up to £30,000 cash advance in 48 hours

We buy any home in as little as 7 days

- ✓ Get a free, no obligation cash offer within 24 hours
- ✓ No estate agent's or solicitor's fees
- ✓ Any condition, any location

CALL FOR FREE
0808 273 1962
www.webuyanyhome.com

The Gazette,
1st Floor, Hudson Quay,
The Halyard, Middlehaven,
Middlesbrough

The reception will be closed between 1pm and 2pm daily.

KENNETH MARSHALL REID (Deceased)
 Pursuant to the Trustee Act 1925 any persons having a claim against or an interest in the Estate of the aforementioned deceased, late of Eden Cottage 37 Cobden Street Darlington formerly of 41 Marton Drive Wolviston Court Billingham TS22 5BA, who died on 14/02/2018, are required to send particulars thereof in writing to the undersigned Solicitors on or before 06/07/2018, after which date the Estate will be distributed having regard only to claims and interests of which they have had notice.
NEWTONS SOLICITORS
 Rosemary House Rosemary Lane
 Richmond North Yorkshire DL10 4DP
 T328879



gazettelive.co.uk/bookanad

GAME OVER

Let somebody else play on and you enjoy the money in your back pocket



BuySell marketPLACE
gazettelive.co.uk/bookanad

BuySell marketPLACE

Book on the move 24/7, mobile booking is now here!

webuyanyhome
 UK's No. 1 Home-Buying Company

Property To Let

TO LET
 2 Bed apartments for over 55's
 Opposite Albert Park
 Flexible Terms.
CALL 0191 477 9944 • 07949084863

CATCH OF THE DAY
 Family pets are on the menu here



gazettelive.co.uk/bookanad

'THE HARDEST FIVE WEEKS'



Katrice Lee, who went missing in Germany more than 36 years ago, below her father Richie Lee.

Katrice Lee's family's anxious wait while police excavate site looking for clues to disappearance

FULL STORY: PAGES 4 & 5



Dad's booze pledge after assaults

A dad-of-one sentenced to three years for two drunken assaults told a judge he is 'finished with the drink'. Sam Brownless carried out unprovoked attacks on two men outside a licensed premises in Hartlepool and Harrow, Middlesex. After being sentenced at Teesside Crown Court, Brownless told Judge Peter Armstrong: "I will never be before you again. I'm done with the drink totally now." ■ Full story: Page 7

FRIENDS' PARK RUN MILESTONE



PAGE 3

CLOWNING AROUND



PAGE 6



**BEAT THE BURGLAR
FIT THE BEST HIGH SECURITY WINDOWS & DOORS**

Don't assume your doors and windows have High Standard Security - Weatherproof Windows
Pride themselves on fitting only the Highest of Quality in Security to protect your Home
YOUR LOCAL SUPPLIERS FOR OVER 38 YEARS



www.weatherproof-windows.co.uk



info@weatherproof-windows.co.uk
For Free advice and Quotes Ring 0800 6522933 or 01429 291622



PUBLIC NOTICES

PUBLIC NOTICES



The Tees Combined Cycle Power Plant (Tees CCPP) Project (Ref: EN010082)
The Planning Act 2008
The Infrastructure Planning (Examination Procedure) Rules 2010 – Rule 17
The Infrastructure Planning (Environmental Impact Assessment) Regulations 2009 – Regulation 17
NOTICE OF CONSULTATION ON A PROPOSED NON-MATERIAL CHANGE

- Notice is hereby given that Sembcorp Utilities UK Limited ('Sembcorp') of PO Box 1985, Wilton International, Middlesbrough, TS90 8WS is proposing a non-material change to the Tees Combined Cycle Power Plant (Tees CCPP) Project (the 'Project').
- The Project comprises the construction, operation and maintenance of a new gas-fired electricity generating station with a nominal net electrical output capacity of up to 1,700 megawatts ('MW') on the site of the former Teesside Power Station, which forms part of the Wilton International Site, Middlesbrough. The site for the Project (the 'Project Site') covers an area of approximately 15 hectares and is located within the south-western part of the Wilton International Site.
- Sembcorp submitted an application (the 'Application') to the Secretary of State (the 'SoS') for Business, Energy and Industrial Strategy for a Development Consent Order ('DCO') on 22 November 2017 under Section 37 of The Planning Act 2008 (the 'Act') to authorise the construction, operation and maintenance of the Project. The Application was accepted for examination by the SoS on 18 December 2017 and the Examination began on 10 April 2018.
- The Project qualifies as Environmental Impact Assessment ('EIA') development for the purposes of the Infrastructure Planning (Environmental Impact Assessment) Regulations 2009. The Application was therefore accompanied by an Environmental Statement ('ES'), setting out the findings of the EIA.
- Since the Application was submitted in November 2017, the Applicant has identified that it may be necessary to increase the maximum height of the turbine hall and heat recovery steam generator ('HRSG') building. The heights are greater than those set out in the Application submitted in November 2017.
- The following non-material change is therefore proposed:
 - increase the maximum height of the turbine hall from 25 metres ('m') to 32m; and
 - increase the maximum height of the HRSG building from 44m to 45m.
- The above comprise Work No.1A (a) and Work No. 1A (b) of the draft DCO (Application Document Ref: 2.1) submitted as part of the Application. The current maximum heights (25m and 44m respectively) are set out in Schedule 2, Requirement 4 of the draft DCO.
- Sembcorp has produced a package of documents (the 'Consultation Documents') setting out information on the proposed non-material change, including updated application documents (where necessary). The Consultation Documents are available to view or download free of charge from the project website: www.tccpp.co.uk and for inspection free of charge from **9 May to 7 June 2018** at the following locations during the hours set out (opening hours may be subject to change):

Locations	Opening Times
Lazenby Village Hall, High Street, Lazenby, TS6 8DX	Wednesdays 10am -12noon & 6-8pm
Roseberry Library, 25K Centre, Ayton Road, Redcar, TS10 4EW	Sunday: closed; Monday: 11:00 - 13:00 & 13:30 - 17:00 Tuesday: 11:00 - 13:00 & 13:30 - 17:00; Wednesday: 10:00 - 13:00 & 13:30 - 15:30; Thursday: 09:00 - 13:00 & 13:30 - 16:00; Friday: 10:00 - 13:00 & 13:30 - 16:00; Saturday: closed
Whale Hill Community Centre, Goathland Road, Middlesbrough, TS6 8AW	Monday - Friday 9am - 3pm
Grangetown Library, Birchington Avenue, Grangetown, TS6 7LS	Sunday: closed; Monday: 09:00 - 17:00; Tuesday: closed; Wednesday: 10:00 - 17:00; Thursday: 10:00 -16:00; Friday: 10:00 -17:00; Saturday: 09:30 - 12:30
Dormanstown Library, 3 Farndale Square, Redcar, TS10 5HQ	Sunday: closed; Monday: closed; Tuesday: 09:30 - 12:15 & 12:45 - 17:00; Wednesday: closed; Thursday: closed; Friday: 09:30 - 12:15 & 12:45 - 17:00; Saturday: closed
South Bank Library, Low Grange Health Village, Normanby Road, South Bank, Middlesbrough, TS6 6TD	Sunday: closed; Monday: 09:00 - 18:00; Tuesday: 09:00 - 18:00; Wednesday: 09:00 - 17:00; Thursday: 09:00 - 18:00; Friday: 09:00 -18:00; Saturday: 09:00 - 12:30
Marske Library, Windy Hill Lane, Marske, Redcar, TS11 7BL	Sunday: closed; Monday: 09:00 - 17:00; Tuesday: 10:00 - 16:00 Wednesday: 10:00 - 17:00; Thursday: closed; Friday: 10:00 - 17:00 Saturday: 09:30 - 12:30
Redcar Library, Redcar & Cleveland House, Kirkleatham Street, Redcar, TS10 1RT	Sunday: closed; Monday: 09:00 - 18:00; Tuesday: 09:00 - 18:00; Wednesday: 09:00 - 18:00; Thursday: 09:00 - 17:00; Friday: 09:00 - 18:00; Saturday: 09:30 - 12:30
Middlesbrough Central Library, Centre Square, Middlesbrough, TS1 2AY	Monday 9:30am - 7pm; Tuesday 9:30am - 7pm; Wednesday 9:30am - 5pm; Thursday 9:30am - 7pm; Friday 9:30am - 5pm; Saturday 9:30am - 5pm; Sunday closed
Stockton Central Library, Church Road, Stockton, TS18 1TU	Monday, Wednesday & Friday 8.30am - 6pm; Tuesday & Thursday 8.30am - 8pm; Saturday 9.30am - 4pm; Sunday closed
Hartlepool Central Library, 124 York Road, Hartlepool, TS26 9DE	Monday to Friday 10am - 6pm; Saturday 10am - 2pm; Sunday closed
Northallerton Library, 1 Thirsk Road, Northallerton, DL6 1PT	Monday 9:30am - 6pm; Tuesday 9:30am - 5pm; Wednesday 9:30am - 6pm; Thursday 1pm - 5pm; Friday 9:30am - 5pm; Saturday 9.30am - 1.30pm; Sunday closed
Scarborough Library, Vernon Road, Scarborough, YO11 2NN	Monday 9am - 6pm; Tuesday 9am - 6pm; Wednesday 10am - 6pm; Thursday 9am - 8pm; Friday 9am - 6pm; Saturday 9am - 5pm; Sunday 11am - 4pm
Darlington Library, Crown Street, Darlington, DL1 1ND	Monday 9am - 6pm; Tuesday 9am - 6pm; Wednesday 9am - 5pm; Thursday 10am - 6pm; Friday 9am - 5pm; Saturday 9am - 4pm; Sunday closed

- A hard copy of all the Consultation Documents is available on request for a maximum copying charge of £50.00. Hard copies of individual documents are also available on request. A CD of the documents is available on request for a charge of £15.00. The documents (or a CD) can be obtained by writing to: **Tees Combined Cycle Power Plant Project, c/o Sembcorp Utilities UK Limited, PO Box 1985, Wilton International, Middlesbrough, TS90 8WS.**
- If you wish to respond to this notice, or make representations in respect of the proposed non-material change, these should be sent to Sembcorp. Please include your name and an address where any correspondence relating to the Project can be sent. Representations may be submitted in the following ways: **Post:** Tees Combined Cycle Power Plant Project, c/o Sembcorp Utilities UK Limited, PO Box 1985, Wilton International, Middlesbrough, TS90 8WS
E-mail: enquiries@tccpp.co.uk
- Your comments will be analysed by Sembcorp and copies will be made available in due course to the Secretary of State, the Planning Inspectorate and other relevant parties involved in the DCO process. We will request that your personal details are not placed on public record and these will be held securely by Sembcorp in accordance with the Data Protection Act 1998.
- Please note that all responses must be received by Sembcorp no later than **11:59pm on 7 June 2018.**
Sembcorp Utilities UK Limited

Policy Expert

www.policyexpert.co.uk/press

Number 1 rated home insurance*

review centre ★★★★★

£50

Amazon.co.uk
gift card

when you switch your home
insurance to Policy Expert**

*Policy Expert is rated the number 1 home insurance provider in the UK on independent review website Reviewcentre.com, based on 17,607 customer reviews, March 2018. **Restrictions apply, see www.amazon.co.uk/gc-legal and www.policyexpert.co.uk/press for full terms and conditions. Policy Expert is a trading name of QMetric Group Limited. Authorised and regulated by the Financial Conduct Authority.

Call free and quote 'PRESS': **0800 031 9102**

The Northern Echo

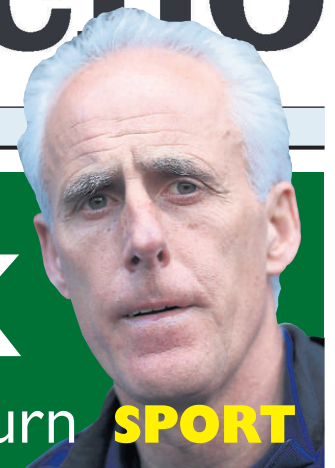
80p

THE GREAT DAILY OF THE NORTH

TUESDAY, MAY 1, 2018

Look who's back

Ex-Black Cats boss McCarthy on Wearside and keen to return **SPORT**

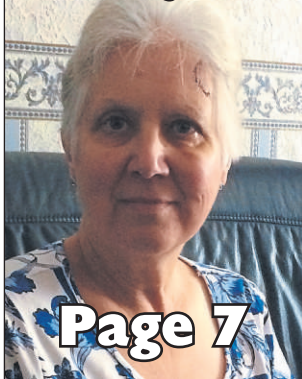


Darlington
Pigeon dilemma at historic market



Page 4

Willington
Hundreds support 'Justice for Jill'



Page 7

Jail for post office robber

Investigation continues as convicted man refuses to name accomplice in terrifying armed raid

By Stuart Arnold
Regional Reporter

stuart.arnold@nne.co.uk

A ROBBER jailed for ten years for a post office raid in which £19,000 worth of cash and cigarettes were stolen is refusing to name his accomplice, who is still at large.

Thomas Hurman, 24, was wearing a high visibility vest and a mask over his mouth, but his eyes and nose were visible during the robbery at Blackwell Post Office, in Carmel Road South, Darlington on February 16.

Police were able to quickly identify and arrest him from CCTV footage, while a bobble hat and goggles found nearby were also linked to Hurman.

However, the other robber, who brandished a firearm at the terrified shop assistant, is still wanted by police.

Teesside Crown Court heard how Hurman, of Rockwell Avenue, Darlington, who has a fiancée and young child, had not co-operated in revealing the other man's



identity to police, fearing for the safety of his family.

Detective Inspector Sharon Alderson, of Durham Police, said last night: "We are pleased with the sentence

which has been imposed by the court because it reflects the seriousness of the crime.

"This must have been a

■ CONTINUED ON PAGE 2

JAIL: Thomas Hurman, who received a ten year sentence for the robbery at Blackwell Post Office in Darlington

Main picture: CHRIS BOOTH



BRAND NEW 2018 CORSA 1.4 (75PS) ENERGY 3DR

FROM **£149** & **£149**
PER MONTH & **ADVANCE RENTAL**
ON PERSONAL CONTRACT HIRE*



UP TO **54.3**
COMBINED MPG

Official Government Test Environmental Data. Fuel consumption figures mpg (litres/100km) and CO₂ emissions (g/km). Vauxhall Corsa Energy range: Urban: 41.5 (6.8) - 60.1 (4.7), Extra-urban: 65.7 (4.2) - 83.1 (3.4), Combined: 54.3 (5.1) - 72.4 (3.9). CO₂ emissions: 137-102g/km. Cars shown for illustration purposes only. *Based on a 47 month agreement. Mileage limitation and excess mileage charges apply. At the end of the agreement you will not own the vehicle. Sherwoods Darlington Ltd is a credit broker and not a lender. Terms and conditions apply. Available to 18s and over. Guarantee / indemnity may be required. Finance provided by ALD Automotive and Auto Service Finance Limited. Approximate combined MPG will depend on driving style, road conditions and other non technical factors. Available on vehicles ordered from 11 April 2018 and registered by 30 June 2018, subject to availability and status.

Sherwoods
SERVING THE COMMUNITY FOR OVER 90 years

Chesnut Street, Darlington,
Co. Durham DL1 1RJ
Tel: 01325 271127



VAUXHALL

Public Notices

Public Notices



The Tees Combined Cycle Power Plant (Tees CCPP) Project (Ref: EN010082)
The Planning Act 2008

The Infrastructure Planning (Examination Procedure) Rules 2010 – Rule 17
The Infrastructure Planning (Environmental Impact Assessment) Regulations 2009 – Regulation 17
NOTICE OF CONSULTATION ON A PROPOSED NON-MATERIAL CHANGE

- Notice is hereby given that Sembcorp Utilities UK Limited ('Sembcorp') of PO Box 1985, Wilton International, Middlesbrough, TS90 8WS is proposing a non-material change to the Tees Combined Cycle Power Plant (Tees CCPP) Project (the 'Project').
- The Project comprises the construction, operation and maintenance of a new gas-fired electricity generating station with a nominal net electrical output capacity of up to 1,700 megawatts ('MW') on the site of the former Teesside Power Station, which forms part of the Wilton International Site, Middlesbrough. The site for the Project (the 'Project Site') covers an area of approximately 15 hectares and is located within the southwestern part of the Wilton International Site.
- Sembcorp submitted an application (the 'Application') to the Secretary of State (the 'SoS') for Business, Energy and Industrial Strategy for a Development Consent Order ('DCO') on 22 November 2017 under Section 37 of The Planning Act 2008 (the 'Act') to authorise the construction, operation and maintenance of the Project. The Application was accepted for examination by the SoS on 18 December 2017 and the Examination began on 10 April 2018.
- The Project qualifies as Environmental Impact Assessment ('EIA') development for the purposes of the Infrastructure Planning (Environmental Impact Assessment) Regulations 2009. The Application was therefore accompanied by an Environmental Statement ('ES'), setting out the findings of the EIA.
- Since the Application was submitted in November 2017, the Applicant has identified that it may be necessary to increase the maximum height of the turbine hall and heat recovery steam generator ('HRSG') building. The heights are greater than those set out in the Application submitted in November 2017.
- The following non-material change is therefore proposed:
 - increase the maximum height of the turbine hall from 25 metres ('m') to 32m; and
 - increase the maximum height of the HRSG building from 44m to 45m.
- The above comprise Work No.1A (a) and Work No. 1A (b) of the draft DCO (Application Document Ref: 2.1) submitted as part of the Application. The current maximum heights (25m and 44m respectively) are set out in Schedule 2, Requirement 4 of the draft DCO.
- Sembcorp has produced a package of documents (the 'Consultation Documents') setting out information on the proposed non-material change, including updated application documents (where necessary). The Consultation Documents are available to view or download free of charge from the project website: www.tccpp.co.uk and for inspection free of charge from 9 May to 7 June 2018 at the following locations during the hours set out (opening hours may be subject to change):

Locations	Opening Times
Lazenby Village Hall, High Street, Lazenby, TS6 8DX	Wednesdays 10am -12noon & 6-8pm
Roseberry Library, 25K Centre, Ayton Rd, Redcar, TS10 4EW	Sunday: closed; Monday: 11:00 - 13:00 & 13:30 - 17:00 Tuesday: 11:00 - 13:00 & 13:30 - 17:00; Wednesday: 10:00 - 13:00 & 13:30 - 15:30; Thursday: 09:00 - 13:00 & 13:30 - 16:00; Friday: 10:00 - 13:00 & 13:30 - 16:00; Saturday: closed
Whale Hill Community Centre, Goathland Road, Middlesbrough, TS6 8AW	Monday - Friday 9am - 3pm
Grangetown Library, Birchington Avenue, Grangetown, TS6 7LS	Sunday: closed; Monday: 09:00 - 17:00; Tuesday: closed; Wednesday: 10:00 - 17:00; Thursday: 10:00 - 16:00; Friday: 10:00 - 17:00; Saturday: 09:30 - 12:30
Dormanstown Library, 3 Farndale Square, Redcar, TS10 5HQ	Sunday: closed; Monday: 09:00 - 17:00; Tuesday: closed; Wednesday: 10:00 - 17:00; Thursday: 10:00 - 16:00; Friday: 10:00 - 17:00; Saturday: 09:30 - 12:30
Dormanstown Library, 3 Farndale Square, Redcar, TS10 5HQ	Sunday: closed; Monday: closed; Tuesday: 09:30 - 12:15 & 12:45 - 17:00; Wednesday: closed; Thursday: closed; Friday: 09:30 - 12:15 & 12:45 - 17:00; Saturday: closed
South Bank Library, Low Grange Health Village, Normanby Road, South Bank, Middlesbrough, TS6 6TD	Sunday: closed; Monday: 09:00 - 18:00; Tuesday: 09:00 - 18:00; Wednesday: 09:00 - 17:00; Thursday: 09:00 - 18:00; Friday: 09:00 - 18:00; Saturday: 09:00 - 12:30
Marske Library, Windy Hill Lane, Marske, Redcar, TS11 7BL	Sunday: closed; Monday: 09:00 - 17:00; Tuesday: 10:00 - 16:00 Wednesday: 10:00 - 17:00; Thursday: closed; Friday: 10:00 - 17:00 Saturday: 09:30 - 12:30
Redcar Library, Redcar & Cleveland House, Kirkleatham Street, Redcar, TS10 1RT	Sunday: closed; Monday: 09:00 - 18:00; Tuesday: 09:00 - 18:00; Wednesday: 09:00 - 18:00; Thursday: 09:00 - 17:00; Friday: 09:00 - 18:00; Saturday: 09:30 - 12:30
Middlesbrough Central Library, Centre Square, Middlesbrough, TS1 2AY	Monday 9:30am - 7pm; Tuesday 9:30am - 7pm; Wednesday 9:30am - 5pm; Thursday 9:30am - 7pm; Friday 9:30am - 5pm; Saturday 9:30am - 5pm; Sunday closed
Stockton Central Library, Church Road, Stockton, TS18 1TU	Monday, Wednesday & Friday 8.30am - 6pm; Tuesday & Thursday 8.30am - 8pm; Saturday 9.30am - 4pm; Sunday closed
Hartlepool Central Library, 124 York Road, Hartlepool, TS26 9DE	Monday to Friday 10am - 6pm; Saturday 10am - 2pm; Sunday closed
Northallerton Library, 1 Thirsk Road, Northallerton, DL6 1PT	Monday 9:30am - 6pm; Tuesday 9:30am - 5pm; Wednesday 9:30am - 6pm; Thursday 1pm - 5pm; Friday 9:30am - 5pm; Saturday 9.30am - 1.30pm; Sunday closed
Scarborough Library, Vernon Road, Scarborough, YO11 2NN	Monday 9am - 6pm; Tuesday 9am - 6pm; Wednesday 10am - 6pm; Thursday 9am - 8pm; Friday 9am - 6pm; Saturday 9am - 5pm; Sunday 11am - 4pm
Darlington Library, Crown Street, Darlington, DL1 1ND	Monday 9am - 6pm; Tuesday 9am - 6pm; Wednesday 9am - 5pm; Thursday 10am - 6pm; Friday 9am - 5pm; Saturday 9am - 4pm; Sunday closed

7. A hard copy of all the Consultation Documents is available on request for a maximum copying charge of £50.00. Hard copies of individual documents are also available on request. A CD of the documents is available on request for a charge of £15.00. The documents (or a CD) can be obtained by writing to: Tees Combined Cycle Power Plant Project, c/o Sembcorp Utilities UK Limited, PO Box 1985, Wilton International, Middlesbrough, TS90 8WS.

8. If you wish to respond to this notice, or make representations in respect of the proposed non-material change, these should be sent to Sembcorp. Please include your name and an address where any correspondence relating to the Project can be sent. Representations may be submitted in the following ways:
Post: Tees Combined Cycle Power Plant Project, c/o Sembcorp Utilities UK Limited, PO Box 1985, Wilton International, Middlesbrough, TS90 8WS
E-mail: enquiries@tccpp.co.uk

9. Your comments will be analysed by Sembcorp and copies will be made available in due course to the Secretary of State, the Planning Inspectorate and other relevant parties involved in the DCO process. We will request that your personal details are not placed on public record and these will be held securely by Sembcorp in accordance with the Data Protection Act 1998.

10. Please note that all responses must be received by Sembcorp no later than **11:59pm on 7 June 2018**.

Sembcorp Utilities UK Limited

Property

Property Wanted

goodmove We buy any house!

Rated 4.9/5 stars on reviews.co.uk

WE BUY HOUSES FOR CASH

- ✓ Sell in days - or in your timescale
- ✓ No fees & no obligation
- ✓ Any condition or location
- ✓ NAPB approved & RICS regulated

GET UP TO £30,000 CASH ADVANCE

BEST PRICE PAID

Call us FREE today for a cash offer available 24/7

0800 031 9133

goodpropertymove.co.uk RICS NABP The Property Institute

WE BUY HOUSES FOR CASH

Sell your house within 7 - 14 days

- Free valuation
- No fees to pay
- 100% cash offer

30 YEARS

01325 520744

buyhomesdirect.co.uk

Household Sales

Antiques

Bentley Swift

We wish to purchase all antiques wanted also coins, medals & militaria, books, postcards, clocks, watches, costume jewellery & ephemeral etc etc etc

call **01325 480561**

Household Sales

Articles For Sale

ART DECO Carlton Ware Octagonal handpainted dish. Exotic birds, tree, shrubs. Black/gold border Hairline crack to base, hence price. 25 x 20cm approx., £65. 01325357800

BOSCH 2400W Steam/Spray/Shot of Steam Iron. Which Best Buy. Ceramic soleplate. Long flex. As new. Boxed. Now surplus to requirements., £25. 01325357800

VINTAGE OVAL Sapphire/Diamond centre, Pearl Choker. Quality piece. Twin row ivory pearls. Oval collet set faux Sapphire/dia. centre. Dia. trim clasp., £55. 01325357800

W E D G W O O D HATHAWAY Rose China Clover Shape Plate. As new, no chips or marks. Matching bell available too. ?10 each. Beautifully decorated., £10. 01325357800

LITTLE BIRD 3-Tier Cake Stand with Glass Plates. Amazon ?34.95, Bargain ?25 Beautiful grey metal cake stand, etched glass plates, bird trim on handle., £25. 01325357800

RETRO VINTAGE Cream Kitchen/Office Wall Clock. Attractive timepiece. Round face, sweep second, cream metal, as new condition. Full working order., £25. 01325357800

BOOK OF British Birds 1974 - Readers Digest. Beautifully illustrated, photographed and sketched. Maps and detailed text. In excellent condition., £25. 01325357800

SEKONDA LADIES S/S Gold Plated Watch - Brand New. Attractive modern round white dial, gold numerals, adjustable strap. Paperwork, seals, boxed., £45. 01325357800

NORWOOD LINED Curtains 64"W x 54"D Still Packaged., Stylish luxury in plain dark red diamond stitched silk finish, fully lined, 3" pencil pleat headings., £45. 01325357800

TOSHIBA STEREO Speakers in black finish. Pair quality corner speakers (triangular shape) c/w leads. Excellent sound quality and condition., £45. 01325357800

GREEN SUEDE Ankle Strap Heels - MandS Ltd Collection. Unworn. Stylish green suede shoe, fully lined with stacked 3" heel. Front stitching detail. Size 5., £30. 01325357800

FULL ETERNITY Ring in Diamond Cut 9ct Yellow Gold. A gorgeous ring, beautifully cut, set with round garnets and white spinels, approx max size L., £99. 01325357800

5 VINTAGE Orchard/Harvest Bavarian 8" Plates. In mint condition beautifully decorated with plain gold edge and fruit in centre. For display., £45. 01325357800

TEDDY BEAR children's ornament - 'Admiral Ted'. Lovely bear wearing patch over one eye. For the nursery. Very good condition. Approx 4" high., £5. 01325357800

MINT VELVET Cotton Lawn pastel floral dress. Fully lined sleeveless wrap dress. Draped front button fastening. Worn once. A beautiful design., £80. 01325357800

5FT CREAM finish luxury headboard with finials. Beautiful smooth finish with grooved swept arch and attractive finials. Lovely condition., £85. 01325357800

Articles For Sale

3FT WHITE Bamboo Headboard. Attractive and stylish openwork bamboo headboard in lovely condition. Must be seen. Original piece., £45. 01325357800

VINTAGE SILVER Plate Cruet Set - S+P and Mustard. With pierced border and complete with blue glass liners. Mustard has hinged lid., £45. 01325357800

QUALITY ROUND Cake Tins, various sizes, for baking. Good selection of baking tins for round cakes. 6" - 10" approx. From ?5 each., £5. 01325357800

MODERN SILVER Plate Cross On smooth 18" 925 chain.. Contemporary design smooth finish attractive accessory., £35. 01325357800

TABLE TOP Hot Tray - keeps food hot!. Easy clean ceramic surface, heatproof handles each end. Useful for quiches, soups, etc. As new., £50. 01325357800

TWO SOLID Pine Chairs with neutral cord seats. Complete with blue striped seat pads. Ready to use or to paint to your taste., £50. 01325357800

SELF PROPELLED Wheelchair. Only used twice. Red. Modern styling. Large rear wheels., £75. 07379833039

FISHING BEDS for Sale. Pair of TF Gear fishing beds. As new - never used outside., £80. 01325260707

JUWEL TROPICAL fish tank 60x36x30 60L with filter, heater and pump and black stand £55 o.n.o 01325 374404 after 4pm

TWO FISH tanks coloured gravel ornaments etc £15 01388 661454

EPAULETTES from Lancaster Regiment £2 per pair 01325 954359

STEERING WHEEL lock disc type with 2 keys £15 o.n.o 01388 833329

SHIPS DE-CANTERS £15 each 01325 954359

MYERS FIRM ¾ mattress cool in summer and warm in winter mint condition £30 01388 6045129 or 07710 325400

DOUBLE DIVAN bed with mattress and drawers very clean, good condition £45 could deliver £45 07856 483306

SINGLE ELECTRIC all night blanket automatic control used only 3 weeks £20 07490 068664

Bicycles & Accessories

LADIES RALEIGH Tundra mountain bike 21 speed Shimano gears silver with pink trim plus extras £75 01325 332898

GIRLS APOLLO bike pink and white good condition £20 01388 815765

GENTS MOUNTAIN bikes x3 £40 01325 315777

PORTABLE CEMENT mixer on wheels £85 07946 281148

TWO SLUMBALUX sleeping bags very clean good quality £12 each or £20 both 01325 255492

GREY BREATHABLE ground sheet 8ft6x9ft6 £10 01325 255492

INDIAN TREE tea set £30 o.n.o 01796 7253090

MOTORBIKE JACKET as new size large £22 o.n.o 01388 833329

DR. MARTEN mens shoes, 2 pairs, black, size 10 as new with labels £30 07887 356849 (Durham city area)

ELECTRIC KETTLE £5 microwave £15 deep fat fryer £20 01388 661454

HOVER VACUUM £5 Dyson vacuum good working order £15 01388 661454

LARDER FRIDGE as new £15 07856 483306 could deliver

SWAN ELECTRIC sandwich maker £5 01388 661454

BEACHCASTER with reel and line good condition £20 07923 224179

DRENNAN BARBLE fishing rod and case immaculate £60 07923 224179

FLY ROD with reel and bag excellent condition £75 07946 281148

LICENSING ACT 2003 - Notice is hereby given that the following application has been submitted to Richmondshire District Council in accordance with the above Act:

- Name of applicant: The Burgoyne Hotel Ltd.
- Postal address of premises: The Burgoyne Hotel, On The Green, Reeth, North Yorkshire, DL11 6SN.
- Proposed variation to licensable activities: Sale of alcoholic drinks to members of the public.
- The register of applications and the record of this application is available for inspection at the Licensing Section, Richmondshire District Council, Mercury House, Station Road, Richmond.
- Representations concerning this application should be submitted, in writing, to the above-named by not later than 20th May 2018.
- is an offence knowingly or recklessly to make a false statement in connection with an application and a person of such an offence is liable on summary conviction to a fine not exceeding level 5 on the standard scale. Dated 23.4.18

Property

Property Services

Go Direct to a Private Landlord

www.letslet.net
Houses, Flats & Bedsits
Darlington & Wear valley
Private Landlord's Associations



northern

UNLIMITED RAIL TRAVEL FOR £10PP

PAGE 51



MADE £38K THROUGH CRIME... PAYS BACK JUST £1

PAGE 4

TEEN LEFT FIGHTING FOR LIFE



By DAVID HUNTLEY an attack on a 17-year-old outside Soho bar in Middlesbrough left him in a critical condition.

FOUR men have been arrested on suspicion of attempted murder after

FULL STORY: PAGE 6

FOUR HELD ON SUSPICION OF ATTEMPTED MURDER



VILLA PARK PLAY-OFF TICKET DETAILS

PAGE 9



MY SONG FOR ELLIOT

PAGE 3



ENGINEERING OPEN EVENING

Wed 9th May 5.30pm - 7.30pm



- FREE - Wi-Fi throughout college
- FREE - gym access*
- FREE - travel*
- FREE - print credits

*Subject to change. Conditions may apply.



Services

Joinery

DARBY'S JOINERY
Where Quality Comes First

Transform Your Home

With Darby's Joinery

- Kitchen Installations • Loft conversions • Doors • Floorings
- Detailed Home Joinery & Bespoke Storage Solutions • Bespoke Cupboards • Skirting & Architraves • External Joinery • Stair Cases

FOR A FREE QUOTE CALL

01642 780376 • 07811399183
www.darbysjoinery.co.uk

Interior & Exterior Doors Fitted

Est over 30 years
Quality & Affordable
Free Estimate

Bryan:
01642 467919

Share the love with your friends



BuySell marketPLACE

Plumbing & Heating

UNBEATABLE & SIMPLE COMBI OFFER

FOR £895 Fitted*

UP TO 10 YEARS WARRANTY & SERVICE PLANS
FREE SURVEY & FIXED PRICE QUOTE

Call FREE on 0800 002 9415 or 07887 482 805 today
Email us at weatherallheating@outlook.com



THE BATHROOM MAN

BATHROOM SUITES Supplied & Fitted, Showers & Cubicles

No job too small
No Bathroom Suites from £399

ALL PLUMBING REPAIRS SPECIAL RATES FOR SENIOR CITIZENS

01642 651285
07884 585931

SPECIAL OFFER:

Complete New Bathroom Suite

incl. PVC Wall Cladding Supplied & Fitted

Only £1500

Suppliers and Fitters of PVC Ceiling & Wall Cladding

Tel 079528 35184/
01642 043376

THE PLUMBER

SHOWERS
BATHROOM SUITES FITTED
SHOWER CUBICLES FITTED
TOILETS & SINKS FITTED
ALL PLUMBING REPAIRS

NO JOB TOO SMALL
SPECIAL RATES FOR SENIOR CITIZENS

FREE CALL OUT & QUOTES

07751 792443

SHOWER MAN

Basic 7 £125
Red Ring 8+ £145
Rapid 8.5 £165

Power Showers ...£225

SHOWERS & CUBICLES SUPPLIED & FITTED.

"We will beat any genuine quote"
Full 5 year guarantee (Subject to survey)

01642 651285
07884 585931

NUNTHORPE PLUMBING & HEATING

All Plumbing & Heating work from service to repair to full installations.

NO JOB TOO SMALL
FREE ESTIMATES

Ring Joseph
01642 289100
07879 405226

PLUMBING & HEATING

24HR CALL OUT
NO JOB TOO SMALL

BOB

07597 722145

Book via mobile

24/7

BuySell marketPLACE

NEED A PLUMBER?

All aspects undertaken & small jobs welcome

1ST 4 PLUMBING
Est 2005
01642 585222
07776 388015

Storage & Removals

SMALL REMOVALS

ALSO BOOT SALE ITEMS WANTED

Garages Cleared
Small Demolitions.
Car removals
also scrap cars removed free.

Call Les for a free estimate
07835 049634

Billingham Removals

Need Something Moving? Collecting? Delivering?

Single Items to Full Removals
Household & Business Removals
House Clearances
Fully Insured

Contact Glen
07903 265409

MAGNUM STORAGE

SELF storage containers, special offer, £9.99pw call 01642 371818

Aerial/Satellite Services

AERIALS FROM £30

REGISTERED DIGITAL INSTALLER

Registered Digital Installer
18288223

01642 295157
07901 576100

AERIALS PLUS

Your Local Qualified digital installer with over 25 years experience

freesat Freeview youview

07979 504060
Multi points O.A.P Discount

SELL IT FREE

BOOKED FREE



Sold £5

FREE for any item under £100, higher priced items just £10 when booked online. Excludes pets, motors and trade.

BuySell marketPLACE bookanad.com

Business

Legal Notices

The Tees Combined Cycle Power Plant (Tees CCGP) Project (Ref: EN010082)
The Planning Act 2008
The Infrastructure Planning (Examination Procedure) Rules 2010 - Rule 17
The Infrastructure Planning (Environmental Impact Assessment) Regulations 2009 - Regulation 17
NOTICE OF CONSULTATION ON A PROPOSED NON-MATERIAL CHANGE



1. Notice is hereby given that Sembcorp Utilities UK Limited ('Sembcorp') of PO Box 1985, Wilton International, Middlesbrough, TS90 8WS is proposing a non-material change to the Tees Combined Cycle Power Plant (Tees CCGP) Project (the 'Project').
2. The Project comprises the construction, operation and maintenance of a new gas-fired electricity generating station with a nominal net electrical output capacity of up to 1,700 megawatts ('MW') on the site of the former Teesside Power Station, which forms part of the Wilton International Site, Middlesbrough. The site for the Project (the 'Project Site') covers an area of approximately 15 hectares and is located within the south-western part of the Wilton International Site.
3. Sembcorp submitted an application (the 'Application') to the Secretary of State (the 'SoS') for Business, Energy and Industrial Strategy for a Development Consent Order ('DCO') on 22 November 2017 under Section 37 of The Planning Act 2008 (the 'Act') to authorise the construction, operation and maintenance of the Project. The Application was accepted for examination by the SoS on 18 December 2017 and the Examination began on 10 April 2018.
4. The Project qualifies as Environmental Impact Assessment ('EIA') development for the purposes of the Infrastructure Planning (Environmental Impact Assessment) Regulations 2009. The Application was therefore accompanied by an Environmental Statement ('ES'), setting out the findings of the EIA.
5. Since the Application was submitted in November 2017, the Applicant has identified that it may be necessary to increase the maximum height of the turbine hall and heat recovery steam generator ('HRSG') building. The heights are greater than those set out in the Application submitted in November 2017.
6. The following non-material change is therefore proposed:
 - increase the maximum height of the turbine hall from 25 metres ('m') to 32m; and
 - increase the maximum height of the HRSG building from 44m to 45m.
7. The above comprise Work No.1A (a) and Work No. 1A (b) of the draft DCO (Application Document Ref: 2.1) submitted as part of the Application. The current maximum heights (25m and 44m respectively) are set out in Schedule 2, Requirement 4 of the draft DCO.
8. Sembcorp has produced a package of documents (the 'Consultation Documents') setting out information on the proposed non-material change, including updated application documents (where necessary). The Consultation Documents are available to view or download free of charge from the project website: www.tccpp.co.uk and for inspection free of charge from **9 May to 7 June 2018** at the following locations during the hours set out (opening hours may be subject to change):

Locations	Opening Times
Lazenby Village Hall, High Street, Lazenby, TS6 8DX	Wednesdays 10am - 12noon & 6-8pm
Roseberry Library, 25K Centre, Ayton Rd, Redcar TS10 4EW	Sunday: closed; Monday: 11:00 - 13:00 & 13:30 - 17:00 Tuesday: 11:00 - 13:00 & 13:30 - 17:00; Wednesday: 10:00 - 13:00 & 13:30 - 15:30; Thursday: 09:00 - 13:00 & 13:30 - 16:00; Friday: 10:00 - 13:00 & 13:30 - 16:00; Saturday: closed
Whale Hill Community Centre, Goathland Road, Middlesbrough, TS6 8AW	Monday - Friday 9am - 3pm
Grangetown Library, Birchington Avenue, Grangetown, TS6 7LS	Sunday: closed; Monday: 09:00 - 17:00; Tuesday: closed; Wednesday: 10:00 - 17:00; Thursday: 10:00 - 16:00; Friday: 10:00 - 17:00; Saturday: 09:30 - 12:30
Dormanstown Library, 3 Fardale Square, Redcar, TS10 5HQ	Sunday: closed; Monday: closed; Tuesday: 09:30 - 12:15 & 12:45 - 17:00; Wednesday: closed; Thursday: closed; Friday: 09:30 - 12:15 & 12:45 - 17:00; Saturday: closed
South Bank Library, Low Grange Health Village, Normanby Road, South Bank, Middlesbrough, TS6 6TD	Sunday: closed; Monday: 09:00 - 18:00; Tuesday: 09:00 - 18:00; Wednesday: 09:00 - 17:00; Thursday: 09:00 - 18:00; Friday: 09:00 - 18:00; Saturday: 09:00 - 12:30
Marske Library, Windy Hill Lane, Marske, Redcar, TS11 7BL	Sunday: closed; Monday: 09:00 - 17:00; Tuesday: 10:00 - 16:00 Wednesday: 10:00 - 17:00; Thursday: closed; Friday: 10:00 - 17:00 Saturday: 09:30 - 12:30
Redcar Library, Redcar & Cleveland House, Kirkleatham Street, Redcar, TS10 1RT	Sunday: closed; Monday: 09:00 - 18:00; Tuesday: 09:00 - 18:00; Wednesday: 09:00 - 18:00; Thursday: 09:00 - 17:00; Friday: 09:00 - 18:00; Saturday: 09:30 - 12:30
Middlesbrough Central Library, Centre Square, Middlesbrough, TS1 2AY	Monday 9:30am - 7pm; Tuesday 9:30am - 7pm; Wednesday 9:30am - 5pm; Thursday 9:30am - 7pm; Friday 9:30am - 5pm; Saturday 9:30am - 5pm; Sunday closed
Stockton Central Library, Church Road, Stockton, TS18 1TU	Monday, Wednesday & Friday 8.30am - 6pm; Tuesday & Thursday 8.30am - 8pm; Saturday 9.30am - 4pm; Sunday closed
Hartlepool Central Library, 124 York Road, Hartlepool, TS26 9DE	Monday to Friday 10am - 6pm; Saturday 10am - 2pm; Sunday closed
Northallerton Library, 1 Thirsk Road, Northallerton, DL6 1PT	Monday 9:30am - 6pm; Tuesday 9:30am - 5pm; Wednesday 9:30am - 6pm; Thursday 1pm - 5pm; Friday 9:30am - 5pm; Saturday 9.30am - 1.30pm; Sunday closed
Scarborough Library, Vernon Road, Scarborough, YO11 2NN	Monday 9am - 6pm; Tuesday 9am - 6pm; Wednesday 10am - 6pm; Thursday 9am - 8pm; Friday 9am - 6pm; Saturday 9am - 5pm; Sunday 11am - 4pm
Darlington Library, Crown Street, Darlington, DL1 1ND	Monday 9am - 6pm; Tuesday 9am - 6pm; Wednesday 9am - 5pm; Thursday 10am - 6pm; Friday 9am - 5pm; Saturday 9am - 4pm; Sunday closed

7. A hard copy of all the Consultation Documents is available on request for a maximum copying charge of £50.00. Hard copies of individual documents are also available on request. A CD of the documents is available on request for a charge of £15.00. The documents (or a CD) can be obtained by writing to: **Tees Combined Cycle Power Plant Project, c/o Sembcorp Utilities UK Limited, PO Box 1985, Wilton International, Middlesbrough, TS90 8WS.**
 8. If you wish to respond to this notice, or make representations in respect of the proposed non-material change, these should be sent to Sembcorp. Please include your name and an address where any correspondence relating to the Project can be sent. Representations may be submitted in the following ways:
Post: Tees Combined Cycle Power Plant Project, c/o Sembcorp Utilities UK Limited, PO Box 1985, Wilton International, Middlesbrough, TS90 8WS
E-mail: enquiries@tccpp.co.uk
 9. Your comments will be analysed by Sembcorp and copies will be made available in due course to the Secretary of State, the Planning Inspectorate and other relevant parties involved in the DCO process. We will request that your personal details are not placed on public record and these will be held securely by Sembcorp in accordance with the Data Protection Act 1998.
 10. Please note that all responses must be received by Sembcorp no later than **11:59pm on 7 June 2018.**
- Sembcorp Utilities UK Limited

The Gazette,
1st Floor, Hudson Quay,
The Halyard, Middlehaven,
Middlesbrough

The reception will be closed
between 1pm and 2pm daily.

BOOKED FREE

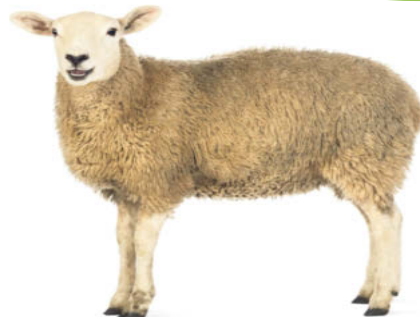


Sold £20

BuySell marketPLACE
gazettelive.co.uk/bookanad

It's okay to follow the

HERD



Shepherd your way to FREE ads

BuySell marketPLACE
gazettelive.co.uk/bookanad

FREE for any item under £100, higher priced items just £10 when booked online. Excludes pets, motors and trade.

'Back our crackdown' - plea to parents



FULL STORY - PAGES 4 & 5



Nursery School Of The Year

THE TOP 10 REVEALED

SEE PAGE 17

'DISGUSTING'



James Bullock at the place in West View Cemetery where he came across a drug user. Inset, discarded needles.

Dad's anger as drug user injects himself while people visited cemetery and leaves needles lying near graves



FULL STORY - PAGE 3

£10 pp



UNLIMITED RAIL TRAVEL WITH



SEE PAGE 15

MORTUARY TOURS PROVING A SELL-OUT

SEE PAGE 2



NEW AND EXCLUSIVE TO WEATHERPROOF WINDOWS

Established 1980

SEE OUR NEW HIGH BRED COMPOSITE DOORS

Our collection offers stunning styles and designs to suit any home

Choice of Colours

YOUR LOCAL SUPPLIERS FOR OVER 38 YEARS

www.weatherproof-windows.co.uk



info@weatherproof-windows.co.uk
 Ring us today for a Free no Obligation Quote
 0800 6522933 or 01429 291622



PUBLIC NOTICES

PUBLIC NOTICES



**The Tees Combined Cycle Power Plant (Tees CCpp) Project (Ref: EN010082)
The Planning Act 2008**

**The Infrastructure Planning (Examination Procedure) Rules 2010 – Rule 17
The Infrastructure Planning (Environmental Impact Assessment) Regulations 2009 – Regulation 17
NOTICE OF CONSULTATION ON A PROPOSED NON-MATERIAL CHANGE**

- Notice is hereby given that Sembcorp Utilities UK Limited ('Sembcorp') of PO Box 1985, Wilton International, Middlesbrough, TS90 8WS is proposing a non-material change to the Tees Combined Cycle Power Plant (Tees CCpp) Project (the 'Project').
- The Project comprises the construction, operation and maintenance of a new gas-fired electricity generating station with a nominal net electrical output capacity of up to 1,700 megawatts ('MW') on the site of the former Teesside Power Station, which forms part of the Wilton International Site, Middlesbrough. The site for the Project (the 'Project Site') covers an area of approximately 15 hectares and is located within the south-western part of the Wilton International Site.
- Sembcorp submitted an application (the 'Application') to the Secretary of State (the 'SoS') for Business, Energy and Industrial Strategy for a Development Consent Order ('DCO') on 22 November 2017 under Section 37 of The Planning Act 2008 (the 'Act') to authorise the construction, operation and maintenance of the Project. The Application was accepted for examination by the SoS on 18 December 2017 and the Examination began on 10 April 2018.
- The Project qualifies as Environmental Impact Assessment ('EIA') development for the purposes of the Infrastructure Planning (Environmental Impact Assessment) Regulations 2009. The Application was therefore accompanied by an Environmental Statement ('ES'), setting out the findings of the EIA.
- Since the Application was submitted in November 2017, the Applicant has identified that it may be necessary to increase the maximum height of the turbine hall and heat recovery steam generator ('HRSG') building. The heights are greater than those set out in the Application submitted in November 2017.
- The following non-material change is therefore proposed:
 - increase the maximum height of the turbine hall from 25 metres ('m') to 32m; and
 - increase the maximum height of the HRSG building from 44m to 45m.
- The above comprise Work No.1A (a) and Work No. 1A (b) of the draft DCO (Application Document Ref: 2.1) submitted as part of the Application. The current maximum heights (25m and 44m respectively) are set out in Schedule 2, Requirement 4 of the draft DCO.
- Sembcorp has produced a package of documents (the 'Consultation Documents') setting out information on the proposed non-material change, including updated application documents (where necessary). The Consultation Documents are available to view or download free of charge from the project website: www.tccpp.co.uk and for inspection free of charge from **9 May to 7 June 2018** at the following locations during the hours set out (opening hours may be subject to change):

Locations	Opening Times
Lazenby Village Hall, High Street, Lazenby, TS6 8DX	Wednesdays 10am -12noon & 6-8pm
Roseberry Library, 25K Centre, Ayton Road, Redcar, TS10 4EW	Sunday: closed; Monday: 11:00 - 13:00 & 13:30 - 17:00 Tuesday: 11:00 - 13:00 & 13:30 - 17:00; Wednesday: 10:00 - 13:00 & 13:30 - 15:30; Thursday: 09:00 - 13:00 & 13:30 - 16:00; Friday: 10:00 - 13:00 & 13:30 - 16:00; Saturday: closed
Whale Hill Community Centre, Goathland Road, Middlesbrough, TS6 8AW	Monday - Friday 9am - 3pm
Grangetown Library, Birchington Avenue, Grangetown, TS6 7LS	Sunday: closed; Monday: 09:00 - 17:00; Tuesday: closed; Wednesday: 10:00 - 17:00; Thursday: 10:00 -16:00; Friday: 10:00 -17:00; Saturday: 09:30 - 12:30
Dormanstown Library, 3 Farndale Square, Redcar, TS10 5HQ	Sunday: closed; Monday: closed; Tuesday: 09:30 - 12:15 & 12:45 - 17:00; Wednesday:closed; Thursday: closed; Friday: 09:30 - 12:15 & 12:45 - 17:00; Saturday: closed
South Bank Library, Low Grange Health Village, Normanby Road, South Bank, Middlesbrough, TS6 6TD	Sunday: closed; Monday: 09:00 - 18:00; Tuesday: 09:00 - 18:00; Wednesday: 09:00 - 17:00; Thursday: 09:00 - 18:00; Friday: 09:00 -18:00; Saturday: 09:00 - 12:30
Marske Library, Windy Hill Lane, Marske, Redcar, TS11 7BL	Sunday: closed; Monday: 09:00 - 17:00; Tuesday: 10:00 - 16:00 Wednesday: 10:00 - 17:00; Thursday: closed; Friday: 10:00 - 17:00 Saturday: 09:30 - 12:30
Redcar Library, Redcar & Cleveland House, Kirkleatham Street, Redcar, TS10 1RT	Sunday: closed; Monday: 09:00 - 18:00; Tuesday: 09:00 - 18:00; Wednesday: 09:00 - 18:00; Thursday: 09:00 - 17:00; Friday: 09:00 - 18:00; Saturday: 09:30 - 12:30
Middlesbrough Central Library, Centre Square, Middlesbrough, TS1 2AY	Monday 9:30am - 7pm; Tuesday 9:30am - 7pm; Wednesday 9:30am - 5pm; Thursday 9:30am - 7pm; Friday 9:30am - 5pm; Saturday 9:30am - 5pm; Sunday closed
Stockton Central Library, Church Road, Stockton, TS18 1TU	Monday, Wednesday & Friday 8.30am - 6pm; Tuesday & Thursday 8.30am - 8pm; Saturday 9.30am - 4pm; Sunday closed
Hartlepool Central Library, 124 York Road, Hartlepool, TS26 9DE	Monday to Friday 10am - 6pm; Saturday 10am - 2pm; Sunday closed
Northallerton Library, 1 Thirsk Road, Northallerton, DL6 1PT	Monday 9:30am - 6pm; Tuesday 9:30am - 5pm; Wednesday 9:30am - 6pm; Thursday 1pm - 5pm; Friday 9:30am - 5pm; Saturday 9.30am - 1.30pm; Sunday closed
Scarborough Library, Vernon Road, Scarborough, YO11 2NN	Monday 9am - 6pm; Tuesday 9am - 6pm; Wednesday 10am - 6pm; Thursday 9am - 8pm; Friday 9am - 6pm; Saturday 9am - 5pm; Sunday 11am - 4pm
Darlington Library, Crown Street, Darlington, DL1 1ND	Monday 9am - 6pm; Tuesday 9am - 6pm; Wednesday 9am - 5pm; Thursday 10am - 6pm; Friday 9am - 5pm; Saturday 9am - 4pm; Sunday closed

- A hard copy of all the Consultation Documents is available on request for a maximum copying charge of £50.00. Hard copies of individual documents are also available on request. A CD of the documents is available on request for a charge of £15.00. The documents (or a CD) can be obtained by writing to: **Tees Combined Cycle Power Plant Project, c/o Sembcorp Utilities UK Limited, PO Box 1985, Wilton International, Middlesbrough, TS90 8WS.**
- If you wish to respond to this notice, or make representations in respect of the proposed non-material change, these should be sent to Sembcorp. Please include your name and an address where any correspondence relating to the Project can be sent. Representations may be submitted in the following ways: **Post:** Tees Combined Cycle Power Plant Project, c/o Sembcorp Utilities UK Limited, PO Box 1985, Wilton International, Middlesbrough, TS90 8WS **E-mail:** enquiries@tccpp.co.uk
- Your comments will be analysed by Sembcorp and copies will be made available in due course to the Secretary of State, the Planning Inspectorate and other relevant parties involved in the DCO process. We will request that your personal details are not placed on public record and these will be held securely by Sembcorp in accordance with the Data Protection Act 1998.
- Please note that all responses must be received by Sembcorp no later than **11:59pm on 7 June 2018.**

Policy Expert

www.policyexpert.co.uk/press

Number 1 rated home insurance*

review centre ★★★★★

£50

Amazon.co.uk

gift card

when you switch your home insurance to Policy Expert**

The Northern Echo

80p

THE GREAT DAILY OF THE NORTH

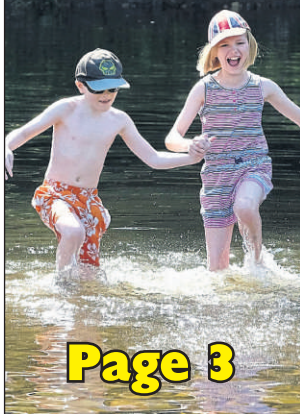
TUESDAY, MAY 8, 2018



TOUR DE JOY

INSIDE: 8-page picture souvenir of the 2018 Tour de Yorkshire

Bank holiday fun in the sun



Page 3

The Echo investigates
Concern over sales of lethal crossbows



Pages 4 & 5



TRAGEDY: The scene at the pedestrian crossing in St Cuthbert's Way, Darlington, where a 29-year-old mother was killed and her four-year-old son injured

Mum, 29, killed crossing road

Four-year-old suffers 'significant injuries' – driver arrested

A YOUNG mother died and her four-year-old son suffered serious injuries after they were struck by a car while crossing the road.

The 29-year-old woman was on a pedestrian crossing with her child when they were hit by a blue Ford Focus in Darlington's St Cuthbert's Way at about 3.40pm on Sunday.

Members of the public reportedly tried to help the stricken pair as emergency services, including the Great North Air Ambulance Service, police and the fire

By **Joanna Morris**
Staff Reporter

joanna.morris@nne.co.uk

gade, rushed to the scene.

The woman, who has not been named, was airlifted to Middlesbrough's James Cook University Hospital but died from her injuries later that evening.

Her child was taken to the same hospital, where he was last night being treated in the paediatric intensive care unit after suffering what po-

lice described as "significant injuries".

The driver – a 36-year-old man – was arrested on suspicion of causing death by dangerous driving and driving while unfit through drink or drugs.

He has been released under investigation while inquiries into the incident, which happened opposite St Cuthbert's Church, continue.

Roads around the area were closed throughout Sunday afternoon as the emergency services worked to help the

injured pair and control traffic in the vicinity to allow the Great North Air Ambulance to land.

Rob Turnbull, of County Durham and Darlington Fire Rescue Service, praised the efforts of those who rushed to the aid of the injured mother and son.

He said that a firefighter returning to his base had been one of the first on the scene and had immediately called in his colleagues to help, with crews from the nearby station assisting po-

lice with road closures and traffic management.

Scores of people took to social media to express their condolences over the tragedy, while some witnesses reported struggling to come to terms with seeing the incident unfold.

Durham Police has urged anyone with information or who saw what happened to contact their collision investigation unit on the non-emergency number 101 or Crimestoppers, anonymously, on 0800-555-111.

Considering 24 hour care options for you or a loved one?

Whether you're thinking about long-term care or just a short break, Rosedale care home (Catterick Garrison, DL9 4DD) offers convenience, choice, and comfort when it comes to enjoying everyday life.

- ✓ Comfortable En-suite Bedrooms.
- ✓ On-site Coffee Shop for Residents & Guests.
- ✓ Daily Activities & Events Programme.
- ✓ Tranquil Setting & Gardens.

- Nursing Care • Residential Care
- Dementia Residential & Nursing Care



Inspected and rated
Good
CareQuality Commission

Call us today on:
01748 841315
mmcgcarehomes.co.uk

find it, buy it,
sell it...

The Northern Echo
CLASSIFIED

General Enquiries:
01325 381444

Public Notices

Public Notices



The Tees Combined Cycle Power Plant (Tees CCPP) Project (Ref: EN010082)
The Planning Act 2008

The Infrastructure Planning (Examination Procedure) Rules 2010 – Rule 17
The Infrastructure Planning (Environmental Impact Assessment) Regulations 2009 – Regulation 17
NOTICE OF CONSULTATION ON A PROPOSED NON-MATERIAL CHANGE

1. Notice is hereby given that Sembcorp Utilities UK Limited ('Sembcorp') of PO Box 1985, Wilton International, Middlesbrough, TS90 8WS is proposing a non-material change to the Tees Combined Cycle Power Plant (Tees CCPP) Project (the 'Project').
2. The Project comprises the construction, operation and maintenance of a new gas-fired electricity generating station with a nominal net electrical output capacity of up to 1,700 megawatts ('MW') on the site of the former Teesside Power Station, which forms part of the Wilton International Site, Middlesbrough. The site for the Project (the 'Project Site') covers an area of approximately 15 hectares and is located within the southwestern part of the Wilton International Site.
3. Sembcorp submitted an application (the 'Application') to the Secretary of State (the 'SoS') for Business, Energy and Industrial Strategy for a Development Consent Order ('DCO') on 22 November 2017 under Section 37 of The Planning Act 2008 (the 'Act') to authorise the construction, operation and maintenance of the Project. The Application was accepted for examination by the SoS on 18 December 2017 and the Examination began on 10 April 2018.
4. The Project qualifies as Environmental Impact Assessment ('EIA') development for the purposes of the Infrastructure Planning (Environmental Impact Assessment) Regulations 2009. The Application was therefore accompanied by an Environmental Statement ('ES'), setting out the findings of the EIA.
5. Since the Application was submitted in November 2017, the Applicant has identified that it may be necessary to increase the maximum height of the turbine hall and heat recovery steam generator ('HRSG') building. The heights are greater than those set out in the Application submitted in November 2017.
6. The following non-material change is therefore proposed:
 - increase the maximum height of the turbine hall from 25 metres ('m') to 32m; and
 - increase the maximum height of the HRSG building from 44m to 45m.
7. The above comprise Work No.1A (a) and Work No. 1A (b) of the draft DCO (Application Document Ref: 2.1) submitted as part of the Application. The current maximum heights (25m and 44m respectively) are set out in Schedule 2, Requirement 4 of the draft DCO.
6. Sembcorp has produced a package of documents (the 'Consultation Documents') setting out information on the proposed non-material change, including updated application documents (where necessary). The Consultation Documents are available to view or download free of charge from the project website: www.tccpp.co.uk and for inspection free of charge from **9 May to 7 June 2018** at the following locations during the hours set out (opening hours may be subject to change):

Locations	Opening Times
Lazenby Village Hall, High Street, Lazenby, TS6 8DX	Wednesdays 10am -12noon & 6-8pm
Roseberry Library, 25K Centre, Ayton Rd, Redcar, TS10 4EW	Sunday: closed; Monday: 11:00 - 13:00 & 13:30 - 17:00 Tuesday: 11:00 - 13:00 & 13:30 - 17:00; Wednesday: 10:00 - 13:00 & 13:30 - 15:30; Thursday: 09:00 - 13:00 & 13:30 - 16:00; Friday: 10:00 - 13:00 & 13:30 - 16:00; Saturday: closed
Whale Hill Community Centre, Goathland Road, Middlesbrough, TS6 8AW	Monday - Friday 9am - 3pm
Grangetown Library, Birchington Avenue, Grangetown, TS6 7LS	Sunday: closed; Monday: 09:00 - 17:00; Tuesday: closed; Wednesday: 10:00 - 17:00; Thursday: 10:00 - 16:00; Friday: 10:00 - 17:00; Saturday: 09:30 - 12:30
Dormanstown Library, 3 Farndale Square, Redcar, TS10 5HQ	Sunday: closed; Monday: 09:00 - 17:00; Tuesday: closed; Wednesday: 10:00 - 17:00; Thursday: 10:00 - 16:00; Friday: 10:00 - 17:00; Saturday: 09:30 - 12:30
Dormanstown Library, 3 Farndale Square, Redcar, TS10 5HQ	Sunday: closed; Monday: closed; Tuesday: 09:30 - 12:15 & 12:45 - 17:00; Wednesday: closed; Thursday: closed; Friday: 09:30 - 12:15 & 12:45 - 17:00; Saturday: closed
South Bank Library, Low Grange Health Village, Normanby Road, South Bank, Middlesbrough, TS6 8TD	Sunday: closed; Monday: 09:00 - 18:00; Tuesday: 09:00 - 18:00; Wednesday: 09:00 - 17:00; Thursday: 09:00 - 18:00; Friday: 09:00 - 18:00; Saturday: 09:00 - 12:30
Marske Library, Windy Hill Lane, Marske, Redcar, TS11 7BL	Sunday: closed; Monday: 09:00 - 17:00; Tuesday: 10:00 - 16:00 Wednesday: 10:00 - 17:00; Thursday: closed; Friday: 10:00 - 17:00 Saturday: 09:30 - 12:30
Redcar Library, Redcar & Cleveland House, Kirkleatham Street, Redcar, TS10 1RT	Sunday: closed; Monday: 09:00 - 18:00; Tuesday: 09:00 - 18:00; Wednesday: 09:00 - 18:00; Thursday: 09:00 - 17:00; Friday: 09:00 - 18:00; Saturday: 09:30 - 12:30
Middlesbrough Central Library, Centre Square, Middlesbrough, TS1 2AY	Monday 9:30am - 7pm; Tuesday 9:30am - 7pm; Wednesday 9:30am - 5pm; Thursday 9:30am - 7pm; Friday 9:30am - 5pm; Saturday 9:30am - 5pm; Sunday closed
Stockton Central Library, Church Road, Stockton, TS18 1TU	Monday, Wednesday & Friday 8.30am - 6pm; Tuesday & Thursday 8.30am - 8pm; Saturday 9.30am - 4pm; Sunday closed
Hartlepool Central Library, 124 York Road, Hartlepool, TS26 9DE	Monday to Friday 10am - 6pm; Saturday 10am - 2pm; Sunday closed
Northallerton Library, 1 Thirsk Road, Northallerton, DL6 1PT	Monday 9:30am - 6pm; Tuesday 9:30am - 5pm; Wednesday 9:30am - 6pm; Thursday 1pm - 5pm; Friday 9:30am - 5pm; Saturday 9.30am - 1.30pm; Sunday closed
Scarborough Library, Vernon Road, Scarborough, YO11 2NN	Monday 9am - 6pm; Tuesday 9am - 6pm; Wednesday 10am - 6pm; Thursday 9am - 8pm; Friday 9am - 6pm; Saturday 9am - 5pm; Sunday 11am - 4pm
Darlington Library, Crown Street, Darlington, DL1 1ND	Monday 9am - 6pm; Tuesday 9am - 6pm; Wednesday 9am - 5pm; Thursday 10am - 6pm; Friday 9am - 5pm; Saturday 9am - 4pm; Sunday closed

7. A hard copy of all the Consultation Documents is available on request for a maximum copying charge of £50.00. Hard copies of individual documents are also available on request. A CD of the documents is available on request for a charge of £15.00. The documents (or a CD) can be obtained by writing to: **Tees Combined Cycle Power Plant Project, c/o Sembcorp Utilities UK Limited, PO Box 1985, Wilton International, Middlesbrough, TS90 8WS.**
8. If you wish to respond to this notice, or make representations in respect of the proposed non-material change, these should be sent to Sembcorp. Please include your name and an address where any correspondence relating to the Project can be sent. Representations may be submitted in the following ways:
Post: Tees Combined Cycle Power Plant Project, c/o Sembcorp Utilities UK Limited, PO Box 1985, Wilton International, Middlesbrough, TS90 8WS
E-mail: enquiries@tccpp.co.uk
9. Your comments will be analysed by Sembcorp and copies will be made available in due course to the Secretary of State, the Planning Inspectorate and other relevant parties involved in the DCO process. We will request that your personal details are not placed on public record and these will be held securely by Sembcorp in accordance with the Data Protection Act 1998.
10. Please note that all responses must be received by Sembcorp no later than **11:59pm on 7 June 2018.**

Sembcorp Utilities UK Limited

PEGGY IRENE BATESON (Deceased)
Pursuant to the Trustee Act 1925 any persons having a claim against or an interest in the Estate of the aforementioned deceased, late of 6 Marshall Street Barnard Castle County Durham DL12 6AG, who died on 12/02/2018, are required to send particulars thereof in writing to the undersigned Solicitors on or before 20/07/2018, after which date the Estate will be distributed having regard only to claims and interests of which they have had notice.
TILLY, BAILEY & IRVINE
8 Newgate Barnard Castle County Durham DL12 6NG TS29504

To advertise here
01325 381444
Classified
Buy it, sell it, love it!

We are... online
Visit thenorthernecho.co.uk for more up to date news, sport, business, entertainment and much more.
You can also advertise online, contact us to find out more.
01325 381444
Monday-Friday 9.00am-5.30pm
advertising@nqyne.co.uk

Property

Property Services

Go Direct to a Private Landlord

www.letslet.net
Houses, Flats & Bedsits
Darlington & Wear valley
Private Landlord's Associations

Property

Property Wanted

goodmove
We buy any house!

WE BUY HOUSES FOR CASH

- ✓ Sell in days - or in your timescale
- ✓ No fees & no obligation
- ✓ Any condition or location
- ✓ NAPB approved & RICS regulated

GET UP TO **£30,000** CASH ADVANCE

BEST PRICE PAID

Call us **FREE** today for a cash offer available 24/7
0800 031 9133
goodpropertymove.co.uk RICS NABTS

WE BUY HOUSES FOR CASH

Sell your house within 7 - 14 days

- Free valuation
- No fees to pay
- 100% cash offer

30 YEARS

01325 520744
buyhomesdirect.co.uk

Household Sales

Antiques

Bentley Swift
We wish to purchase all antiques wanted also coins, medals & militaria, books, postcards, clocks, watches, costume jewellery & ephemera. Houses cleared etc etc etc call **01325 480561**

Articles For Sale

SPOT CASH
For furniture, suites, beds, fridges, freezers, washers, cookers.
Houses cleared
01388 745 278
or **07814 117 437**

SUNBED LOUNGERS
x2 steel frames and padded cushions good condition £30 01325 320268
ALPACA FLEECES
untreated, £20 per bag o.n.o please ring for details 07552 656777
TWO AID LASER 2000 spray gun suction fed unused boxed £35 01388 776156
CAR AMP 250W £25 01325 285112 or 07546 987386
PORTABLE typewriter Silver Reed as new £25 07714 026374

Articles For Sale

ANIMEX binoculars good condition £15 01325 320268
FENCE POSTS x5 6ft good condition £15 01748 810879
Bedrooms & Bedding
MARKS & SPENCER feather and down 13.5' tog king duvets x2. As brand new, unused as wrong size £70 for both or £40 each Tel 01388 832743
SUPER KING Ziplink divan bed with 4 drawers 180x198 very good condition £100 01325 282175 after 4pm collect only
DOUBLE MATTRESS quilted damask material never used, possible delivery £90 Tel. 07881 917931
DOUBLE DIVAN bed base, never used £50 Tel. 07881 917931

Household Sales

Bedrooms & Bedding

KINGSIZE PADDED headboard 5ft plain champagne colour very good condition £35 01325 488287

Bicycles & Accessories

FRANK THOMAS black over trousers for motorbike riding. Large size, good condition, £25. 01325 357560
CHILDS TRAILGATOR sits behind adult bike £20 01325 718233
CHILDS BIKE seat £5 01325 718233

Books, Records & CDs

EMMERSON, LAKE and Palmer vinyl LP's x2 £25 each 07881 917931

Building & DIY

ALUMINIUM CAT ladder £100 01325 250827

Camping and Caravan Equipment

CARAVAN TRAILER lock with keys, bulldog type good condition £45 01325 250827

Carpets & Flooring

LARGE LIVING room and stair carpet can be seen in situ for next 2 weeks £99 0191 588250

Children's Corner

CHILDS BLUE desk with lift up lid and stool excellent condition £10 07717 284882

China & Glassware

AYNSLEY WILD Tudor vases various sizes £6 small £15 medium and £26 for large 01388 819904
AYNSLEY COTTAGE Garden vases various sizes £6 small £16 medium and £26 for large 01388 819904

Clothing, Shoes and Accessories

PAIR LEATHER black army style boots, steel toe caps size 7 as new £8 01388 776156
BLUE FABRIC trainers size 7 Euro 41 boys £5 07887 356849 Durham City Area
MOTORBIKE CRASH helmets x2 as new £10 each 0191 3864436
MENS RIGGER boots unused size 10 £10 0191 3864436

Curtains & Blinds

PLAIN GREY lined eyelet curtains, 2 pairs. 44" x 90" As new £30 Tel. 07867 720849 Bishop Auckland

Disabled Equipment

SELF PROPELLED Wheelchair. The back folds down and the large rear wheels are detachable. Can deliver, £75. 07379833039

Domestic Appliances

INDESIT WASHING machine £80 o.n.o 07548 473336 can deliver

APPENDIX 5 – EXA CONSULTATION LETTER



National Infrastructure Planning
Temple Quay House
2 The Square
Bristol, BS1 6PN

To all Interested Parties

Your Ref:

Our Ref: EN010082

Date: 8 May 2018

Dear Sir or Madam

**Planning Act 2008 (as amended) and The Infrastructure Planning
(Examination Procedure) Rules 2010 (as amended) – Rule 17**

**Application by Sembcorp Utilities (UK) Limited for an Order
Granting Development Consent for the Proposed Tees CCPP
Project**

Request for further information from all Interested Parties

Proposed Changes to the Original Application

On the 2 May 2018 the Applicant submitted a request to change its original Application. The details of these proposed changes are the following aspects of the Application:

- an increase in the maximum height of the turbine hall buildings from 25 metres ('m') to 32 m; and
- an increase in the maximum height of the HRSG buildings from 44 m to 45 m.

The above comprise of Work No.1A (a) and Work No. 1A (b) of the draft DCO [Examination Library Ref: APP-005]. The current maximum heights (25 m and 44 m respectively) are set out in Schedule 2, Requirement 4 of the draft DCO.

I am now inviting comments on these changes, and will need to consider whether these represent material changes to the Application that was the subject of public consultation and the Environmental Impact Assessment.

Details of the proposed change can be viewed on the Tees CCPP project page:

<https://infrastructure.planninginspectorate.gov.uk/projects/north-east/tees-ccpp/?ipcsection=docs&stage=4&filter1=Post+Submission+Changes>

To assist me in my consideration of these changes, I would welcome comments on them, and in particular on whether they represent a material change to the application such that I should not accept them.

Please submit any comments that you wish to make on these changes by email or in writing to the above address by **Tuesday 29 May 2018**.

If you have any further queries, please do not hesitate to contact us.

Yours faithfully

David Richards
Examining Authority

Advice may be given about applying for an order granting development consent or making representations about an application (or a proposed application). This communication does not however constitute legal advice upon which you can rely and you should obtain your own legal advice and professional advice as required.

A record of the advice which is provided will be recorded on the National Infrastructure Planning website together with the name of the person or organisation who asked for the advice. The privacy of any other personal information will be protected in accordance with our Information Charter which you should view before sending information to the Planning Inspectorate.

APPENDIX 6 – CONSULTATION RESPONSES

OFFICIAL



Protecting local
communities

Your Ref: EN10082

Our Ref: C0300452 MS

Date: 15 May 2018

Sembcorp Utilities UK Limited
Greystone Road
Eston
Middlesbrough
TS908JA

Chief Fire Officer
Ian Hayton

Dear Sir

THE REGULATORY REFORM (FIRE SAFETY) ORDER 2005
TEES CCPP GREYSTONE ROAD ESTON MIDDLESBROUGH TS908JA

Thank you for including Cleveland Fire Brigade in the consultation of this non material change proposition.

I can confirm that I have viewed all the information and have no representation to make on this matter.

Should you require any further information please do not hesitate to get in touch.

Kind Regards

For Chief Fire Officer

Cleveland Fire Brigade

Training & Administration Hub, Endeavour House, Queens Meadow Business Park, Hartlepool, TS25 5TH

T: 01429 872311 **E:** info@clevelandfire.gov.uk **W:** www.clevelandfire.gov.uk  [@ClevelandFB](https://twitter.com/ClevelandFB)  [/ClevelandFB](https://www.facebook.com/ClevelandFB)

Direct Line:
E-mail:
Your Ref: EN010082

7th June 2018

FAO: Scott Taylor

Dear Mr Taylor,

Subject: Tees Combined Cycle Power Plant Project – Consultation on proposed non-material change in relation to buildings heights

Thank you for consulting Northumbrian Water on the above proposed development.

In making our response to the above consultation Northumbrian Water will assess the impact of the proposed development on our assets and may assess the capacity within Northumbrian Water's network to accommodate and treat the anticipated flows arising from the development. We do not offer comment on aspects of developments that are outside of our area of control.

Having assessed the proposed development against the context outlined above I can confirm that at this stage we would have no comments to make with regards to the change in height of the turbine hall and HRSG building.

I trust this information is helpful to you, if you should require any further information please do not hesitate to contact me.

Yours sincerely

Carrie Taylor
Development Planning Assistant

From: Teesside CCpp
To: [Jake Barnes-Gott](#)
Subject: Fw: TCCPP - Consultation on proposed non material change in relation to buildings heights.
Date: 01 June 2018 13:24:18

From:
Sent: 17 May 2018 14:12
To: enquiries@tccpp.co.uk
Subject: TCCPP - Consultation on proposed non material change in relation to buildings heights.

Dear Sir/Madam,

Thank you for your letter dated 3rd May - Loftus Town Council comments as follows:-

EN010082- The Tees combined power plant project - consultation on proposed non-material change in relation to building height - **NO OBJECTION** - members hope that improved transport links will be taken into consideration as part of the full development to increase employment opportunities for residents within Loftus Parish.

Kind Regards,
Sarah Yates
Loftus Town Council

The information contained in this e-mail and any files transmitted with it are confidential and intended for the addressee only. If you have received this e-mail in error, please notify the originator or telephone +44 (0) 1642 212000. This e-mail and any attachments have been scanned for viruses prior to leaving Sembcorp. Sembcorp will not be liable for any losses as a result of any viruses being passed on. Sembcorp Utilities (UK) Limited
Registered in England: Reg. No. 4636301 Registered Office: Sembcorp UK Headquarters,
Wilton International, Middlesbrough, TS90 8WS

This email has been scanned on behalf of Dalton Warner Davis by MessageLabs.

From: Teesside CCPP
To:
Subject: Fw: Tees CCPP Project - request for further information
Date: 01 June 2018 13:23:27
Attachments: [image005.png](#)
[image006.jpg](#)
[image010.png](#)
[image012.png](#)
[image014.png](#)
[image009.png](#)
[image011.png](#)
[image013.png](#)

From:
Sent: 29 May 2018 09:08
To:
Cc:
Subject: Tees CCPP Project - request for further information

Dear Examining Authority,

The proposed changes make no material difference to HSE's previous advice.

Kind regards,

Dave Adams
Dave.MHPD.Adams
Major Hazards Policy – Chemicals & Land Use Planning | Chemicals, Explosives & Microbiological Hazards Division | Health and Safety Executive.
2.2.76 Redgrave Court, Merton Road, Bootle, Merseyside L20 7HS

www.hse.gov.uk | <http://hse.gov.uk/landuseplanning>

HSE EVP Blue Logo.png



From: Sent: 08 May 2018 14:17
To: NSIP Applications
Subject: TRIM: Tees CCPP Project



National Infrastructure Planning
Temple Quay House
2 The Square
Bristol, BS1 6PN

Customer Services: 0303 444 5000
e-mail: TeesCCPP@pins.gsi.gov.uk

Sent by email

Your Ref:

Our Ref: EN010082

Date: 8 May 2018

Dear Sir or Madam



Planning Act 2008 (as amended) and The Infrastructure Planning (Examination Procedure) Rules 2010 (as amended) – Rule 17

Application by Sembcorp Utilities (UK) Limited for an Order Granting Development Consent for the Proposed Tees CCPP Project

Request for further information from all Interested Parties

Proposed Changes to the Original Application

On the 2 May 2018 the Applicant submitted a request to change its original Application. The details of these proposed changes are the following aspects of the Application:

- an increase in the maximum height of the turbine hall buildings from 25 metres ('m') to 32 m; and

- an increase in the maximum height of the HRSG buildings from 44 m to 45 m.

The above comprise of Work No.1A (a) and Work No. 1A (b) of the draft DCO [Examination Library Ref: APP-005]. The current maximum heights (25 m and 44 m respectively) are set out in Schedule 2, Requirement 4 of the draft DCO.

I am now inviting comments on these changes, and will need to consider whether these represent material changes to the Application that was the subject of public consultation and the Environmental Impact Assessment.

Details of the proposed change can be viewed on the Tees CCPP project page:

<https://infrastructure.planninginspectorate.gov.uk/projects/north-east/tees-ccpp/?ipcsection=docs&stage=4&filter1=Post+Submission+Changes>

To assist me in my consideration of these changes, I would welcome comments on them, and in particular on whether they represent a material change to the application such that I should not accept them.

Please submit any comments that you wish to make on these changes by email to TeesCCPP@Pins.gsi.gov.uk or in writing to the above address by **Tuesday 29 May 2018**.

If you have any further queries, please do not hesitate to contact us.

Yours faithfully

David Richards
Examining Authority



Correspondents should note that all communications to or from the Planning Inspectorate may be automatically logged, monitored and/or recorded for lawful purposes.

This email and any files transmitted with it are confidential and intended solely for the use of the individual or entity to whom they are addressed. If you have received this email in error please notify the system manager.

This footnote also confirms that this email message has been scanned by Websense Email Security Gateway for the presence of computer viruses.

.....
Please note : Incoming and outgoing email messages are routinely monitored for compliance with our policy on the use of electronic communications and may be automatically logged, monitored and / or recorded for lawful purposes by the GSI service provider.

Interested in Occupational Health and Safety information?
Please visit the HSE website at the following address to keep yourself up to date

www.hse.gov.uk

.....

The information contained in this e-mail and any files transmitted with it are confidential and intended for the addressee only. If you have received this e-mail in error, please notify the originator or telephone +44 (0) 1642 212000. This e-mail and any attachments have been scanned for viruses prior to leaving Sembcorp. Sembcorp will not be liable for any losses as a result of any viruses being passed on. Sembcorp Utilities (UK) Limited Registered in England: Reg. No. 4636301 Registered Office: Sembcorp UK Headquarters, Wilton International, Middlesbrough, TS90 8WS



Public Health
England

CRCE/NSIP Consultations
Chilton
Didcot
Oxfordshire OX11 0RQ

Mr Scott Taylor
Sembcorp Utilities (UK) Limited
P O Box 1985
Wilton International
Middlesbrough
TS90 8WS

Your Ref: EN010082
Our Ref : CIRIS 43788

22nd May 2018

Dear Mr Taylor

**EN010082 – THE TEES COMBINED CYCLE POWER PLANT PROJECT – PROPOSED
NON-MATERIAL CHANGE IN RELATION TO BUILDING HEIGHTS**

**THE PLANNING ACT 2008 (AS AMENDED) AND THE INFRASTRUCTURE PLANNING
(EXAMINATION PROCEDURE) RULES 2010 (AS AMENDED) – RULE 17**

Thank you for notifying Public Health England (PHE) of the proposed changes to this Nationally Significant Infrastructure Project (NSIP). We note the necessary amendments to be made in the application documents and the justification of why the change is considered non-material.

On this occasion we have no additional comments to provide at this stage of the NSIP application.

We note that we have replied to earlier consultations as listed below and this response should be read in conjunction with that earlier correspondence.

Request for Scoping Opinion 15 March 2017
Response to Section 42 20 July 2017

Yours sincerely

Haymond Lam
Environmental Public Health Scientist



Ministry
of Defence

Defence Infrastructure Organisation

Sembcorp Utilities (UK) Limited
PO Box 1985
Wilton International
Middlesbrough
TS90 8WS

Your Reference: EN010082

Our reference: 10043441

Dear Sir / Madam

MOD Safeguarding

Safeguarding Department
Statutory & Offshore

Defence Infrastructure Organisation
Kingston Road
Sutton Coldfield
West Midlands
B75 7RL

www.mod.uk/DIO

04 June 2018

Proposal: The Tee Combined cycle power plant project - consultation of proposed Non-material change in relation to building height. An increase in the maximum height of the turbine hall from 25m to 32m. An increase in the maximum height of the HRSG building from 44m to 45m.

Thank you for consulting the Ministry of Defence (MOD) on the above proposed development which was received by this office on 14th May 2018.

I can confirm that the MOD has no safeguarding objection to this proposal.

I trust this is clear however should you have any questions please do not hesitate to contact me.

Yours faithfully

Jill Roberts
Assistant Safeguarding Officer

From: Teesside Ccpp
To:
Cc:
Subject: Fw: Objection
Date: 12 June 2018 08:18:48

From: (member of the local community)
Sent: 07 June 2018 17:26
To: enquiries@tccpp.co.uk
Subject: Objection

To Sembcorp, the planning inspectorate, the Secretary of State and any other relevant parties I want to object to the requested changes in height increases. I also object to the siting, the purpose of this power station and the uneconomical- wasteful use of gas to produce surplus energy, as Wilton site has already got a power station that produces enough energy for industrial plants there which has already paid out compensation to a number of residents, but not all, for the stench that it causes.

This power station plan was also pitched to the community as the green option to provide power there!! This siting of a monster power station again - remember ENRON? will cause massive environmental issues for Lazenby as well as the wider communities. The height and width of buildings will totally dominate the skyline, like Enron did. Residents now have hindsight and an insight into the effects of power station emissions and the environmental impact on their quality of life they endured.

Lazenby is in a valley and in certain weather conditions any emissions are trapped over Lazenby and are unable to disperse, also trapping other emissions from other plants. This combined pollution hangs over the village and the wider valley for days blocking light and sun. The steam from Enron also hung heavy in the atmosphere and was forced down like a fog onto our roads, causing traffic hazards. Motorists could not see cars in front of them, people experienced breathing issues, nausea with the air thick with who knows what as we are not privy too what comes out of the stacks!

The siting of a power station in this location is unacceptable, its size, its function and its emissions have a massive environmental impact that have been felt before- this is not a site in this day and age to repeat this same mistake again. Wilton site also has the oil cracker plant which flares when it goes wrong with toxic fumes, black acrid smoke which residents are exposed too as well!!!! and can be seen miles away!!!!

The raising of the height of these buildings haven't been shown in relation to the residents that live the nearest to it, which is of note, as only the allotments have been used, which are further away from the proposed building that have been used for scale!

I have a blast mound of earth which is supposed to reassure and protect me from any danger

from the Enron site between it and my home. My part of lazenby is the closest to it.

No one anticipated the blight of the power station stacks , noise and emissions that we have already endured from the Enron scandle-people telling us that energy needs to be produced there! Move these activities further away from communities along the gas line if you must waste our gas reserves. We are saturated with energy production - wind turbines locally produce a renewable green energy that we also needed in this area - were is the energy going that Wilton potentially needs,what's happened to that plan? Or is it that activities on this site can go without being challenged due to out dated covenants and provide opportunities for businesses to pursue profits ?

I don't want to live looking at a giant power station, I want to be able to see the sky, and know what the weather is truly like without having to go out of lazenby to see the sun !
I don't want to live in a noisy environment with the the turbines grinding and the power hissing in the air day and night and the steam !
I don't want to hear that the energy is for potential requirements ?

We had all of these issues to put up with and the stress it caused with the last power station that was deemed to be needed.
Most of those people involved in the last power station project ended up in prison and residents were proved right about all their concerns about the environment and the reduction of their quality of life.

I want to register my opposition to these changes.

think that because land is protected in this quality
Sent from my iPhone

The information contained in this e-mail and any files transmitted with it are confidential and intended for the addressee only. If you have received this e-mail in error, please notify the originator or telephone +44 (0) 1642 212000. This e-mail and any attachments have been scanned for viruses prior to leaving Sembcorp. Sembcorp will not be liable for any losses as a result of any viruses being passed on. Sembcorp Utilities (UK) Limited Registered in England: Reg. No. 4636301 Registered Office: Sembcorp UK Headquarters, Wilton International, Middlesbrough, TS90 8WS

This email has been scanned on behalf of Dalton Warner Davis by MessageLabs.

From:
To: [Tees CCPP](#)
Cc:
Subject: Historic England advice on case PL00068024
Date: 09 May 2018 11:35:31
Attachments: [_HERef_PL00068024_D82059.pdf](#)

Dear Mr Richards

I am writing in relation to the following:

NSIP: National Significant Infrastructure Project (DCO)
Teesside Combined Cycle Power Plant, Redcar & Cleveland
[Case Ref. PL00068024; HE File Ref. NSIP0087/00; Your Reference. 170221_EN010082-000011]

Please find attached Historic England's response to the recent consultation regarding changes to the original application.

Yours Sincerely

Claire Botham on behalf of Rosie Brady
Business Officer

We help people understand, enjoy and value the historic environment, and protect it for the future. Historic England is a public body, and we champion everyone's heritage, across England.

We have moved! Our new London office is at 4th Floor, Cannon Bridge House, 25 Dowgate Hill, London, EC4R 2YA.

This e-mail (and any attachments) is confidential and may contain personal views which are not the views of Historic England unless specifically stated. If you have received it in error, please delete it from your system and notify the sender immediately. Do not use, copy or disclose the information in any way nor act in reliance on it. Any information sent to Historic England may become publicly available.

This email has been scanned by the Symantec Email Security.cloud service.
For more information please visit <http://www.symanteccloud.com>



Historic England

NORTH EAST OFFICE

Mr David Richards
The Planning Inspectorate
National Infrastructure Planning
Temple Quay House, 2 The Square
Bristol
BS1 6PN

Direct Dial: 0191-2691231

Our ref: PL00068024

9 May 2018

Dear Mr Richards

**TEESSIDE COMBINED CYCLE POWER PLANT, REDCAR & CLEVELAND
Proposed changes to the original application**

Thank you for your letter dated 08 May 2018 regarding changes to the original application.

Historic England has no further comments to make.

We would strongly recommend that you involve the conservation officer Tim Brown and the archaeological advisers at Redcar & Cleveland local authority. They are best placed to advise on local historic environment issues and priorities; how the proposal can be tailored to avoid and minimise potential adverse impacts on the historic environment; the nature and design of any required mitigation measures; and opportunities for securing wider benefits for the future conservation and management of heritage assets.

Yours sincerely,

Rosie Brady
Inspector of Historic Buildings & Areas (North East)



BESSIE SURTEES HOUSE 41-44 SANDHILL NEWCASTLE-UPON-TYNE NE1 3JF

Telephone 0191 269 1255
HistoricEngland.org.uk





Public Health
England

CRCE/NSIP Consultations
Chilton
Didcot
Oxfordshire OX11 0RQ

Mr Scott Taylor
Sembcorp Utilities (UK) Limited
P O Box 1985
Wilton International
Middlesbrough
TS90 8WS

Your Ref: EN010082
Our Ref : CIRIS 43788

22nd May 2018

Dear Mr Taylor

**EN010082 – THE TEES COMBINED CYCLE POWER PLANT PROJECT – PROPOSED
NON-MATERIAL CHANGE IN RELATION TO BUILDING HEIGHTS**

**THE PLANNING ACT 2008 (AS AMENDED) AND THE INFRASTRUCTURE PLANNING
(EXAMINATION PROCEDURE) RULES 2010 (AS AMENDED) – RULE 17**

Thank you for notifying Public Health England (PHE) of the proposed changes to this Nationally Significant Infrastructure Project (NSIP). We note the necessary amendments to be made in the application documents and the justification of why the change is considered non-material.

On this occasion we have no additional comments to provide at this stage of the NSIP application.

We note that we have replied to earlier consultations as listed below and this response should be read in conjunction with that earlier correspondence.

Request for Scoping Opinion 15 March 2017
Response to Section 42 20 July 2017

Yours sincerely

Haymond Lam
Environmental Public Health Scientist

Date: 29 May 2018
Our ref: 246376, Case 11945
Your ref: EN010082



National Infrastructure Planning
Temple Quay House
2 The Square
Bristol
BS1 6PN

Customer Services
Hornbeam House
Crewe Business Park
Electra Way
Crewe
Cheshire
CW1 6GJ

BY EMAIL ONLY

T 0300 060 3900

Dear Sir/ Madam

Planning Act 2008 (as amended) and The Infrastructure Planning (Examination Procedure) Rules 2010 (as amended) – Rule 17

Application by Sembcorp Utilities (UK) Ltd for an Order Granting Development Consent for the Proposed Tees CCPP Project

Request for further information from all Interested Parties

Proposed changes to the Original Application

Thank you for your consultation on the above dated 08 May 2018 which was received by Natural England on the same day

Natural England is a non-departmental public body. Our statutory purpose is to ensure that the natural environment is conserved, enhanced, and managed for the benefit of present and future generations, thereby contributing to sustainable development.

SUMMARY OF NATURAL ENGLAND'S ADVICE

NO OBJECTION

Based on the information submitted, Natural England considers that the proposed changes to the development will not have significant adverse impacts on designated sites

Natural England's advice on other natural environment issues is set out below.

European sites – Teesmouth and Cleveland Coast Special Protection Area (SPA) and Ramsar Site

Based on the plans submitted, Natural England considers that the proposed changes to the development will not have likely significant effects on the Teesmouth and Cleveland Coast Special Protection Area and Ramsar site and has no objection.

To meet the requirements of the Habitats Regulations, we advise you to record your decision that a likely significant effect can be ruled out. The following may provide a suitable justification for that decision:

- The proposed changes will not significantly alter the modelled dispersal areas for the emissions from the development, and so do not affect the conclusions of the HRA.

South Gare and Coatham Sands Site of Special Scientific Interest

Based on the plans submitted, Natural England considers that the proposed changes to the

development will not damage or destroy the interest features for which the site has been notified and has no objection.

Should the proposal change, please consult us again.

If you have any queries relating to the advice in this letter please contact me

Yours faithfully

Andrew Whitehead
Northumbria Area Team

Planning Inspectorate
National Infrastructure Planning
Temple Quay House (2 The Square)
Temple Quay
Bristol
BS1 6PN

Our ref: NA/2018/114039/02-L01
Your ref: EN010082
Date: 25 May 2018

Dear Sir/Madam

**APPLICATION BY SEMBCORP UTILITIES (UK) LIMITED FOR AN ORDER GRANTING DEVELOPMENT CONSENT FOR THE TEES CCPP PROJECT. PLANNING ACT 2008 (AS AMENDED) AND THE INFRASTRUCTURE PLANNING (EXAMINATION PROCEDURE) RULES 2010 (AS AMENDED) – RULE 17
PROPOSED CHANGES TO THE ORIGINAL APPLICATION.**

Thank you for your letter in respect of the proposed changes to the above Development Consent Order (DCO) application, which we received on 8 May 2018.

The proposed changes to the original DCO application are:

- an increase in the maximum height of the turbine hall buildings from 25 metres ('m') to 32m; and
- an increase in the maximum height of the Heat Recovery Steam Generator (HRSG) buildings from 44m to 45m.

We have assessed the submitted information for the proposed changes and have the following comments to make.

Environment Agency Position

We consider that the proposed changes do not form a material change to the original DCO application.

We have based this reasoning on issues that fall within our remit to comment upon for the DCO application. Based upon the information submitted, we advise that we do not anticipate the proposed changes will generate a new or different



likely significant environmental effect than that already assessed within the original DCO application for the reasons outlined below.

Air Quality

According to Annex A of Implications of Requested Change on the EIA (IRCE), Doc Ref: 8.3, which replicates building height information from the Preliminary Environmental Impact Report (PEIR) and Environmental Statement (ES), the ES has already modelled environmental impacts using the proposed increased HRSG building height of 45m. Therefore, the applicant has provided environmental impact data for the proposed increase in HRSG height of 1m, and this data suggests there is no change in environmental impact as a result of an increase in the height of the HRSG building from 44m to 45m.

Annex A of IRCE shows that the ES has already modelled environmental impacts using a turbine hall building height of 31m. The Rule 17 DCO modification relates to a turbine hall increase from 25m to 32m. Based on the environmental impact information provided for the turbine hall building at 31m, it is reasonable to assume that the proposed 1m increase to the height of the turbine hall is unlikely to cause a significant change in environmental impact. Also, the turbine hall is located further from the stack than the taller HRSG and therefore should be less likely to cause downwash effects.

We note that the applicant has presented identical air model results in the PEIR and ES reports, as shown in Annex A of IRCE), for a turbine hall building height of 21.3m in the PEIR and subsequently 31m in the ES. Although, it is possible that the air model results could remain the same for the turbine hall building, there does not appear to be a detailed explanation for why this is the case within the IRCE. This will need to be explained within the DCO documents.

We cannot comment further on the environmental impact of the proposed increases in building heights without undertaking a detailed assessment of environmental impact, using the preferred contractor's stack heights, stack diameters, stack location, building locations and designs.

Noise

Altering the height of buildings has the potential to channel noise towards new sensitive receptors. During the determination of the Environmental Permit, an assessment of the preferred contractor's proposed noise abatement equipment, noise impact assessment and noise monitoring will be conducted. We are unable to provide further comments in respect of this matter at the DCO stage.

Air Emission Monitoring Platform

We note that the air emissions monitoring platforms on both stacks, have not been shown on the photomontages.



In order to demonstrate compliance with the Environmental Permit, the optimum position of the air emissions monitoring points and the air emissions monitoring platform is an integral part of the overall plant design to ensure the applicant can extract a representative sample of their emissions to air, for analysis. We would anticipate that these large platforms will be located approximately half way up each stack.

Guidance on the acceptable location of the air monitoring points and the monitoring platform design are held within Technical Guidance Note TGN M1 "Sampling Requirements for Stack Emissions Monitoring".

The proposed changes to the DCO application are to increase the height of the HSRG building and turbine hall building. However, the applicant's consultation leaflet does mention that the stacks leading from the gas turbines will be no more than 75m in height and that they will continue to work to see if they can be reduced further. It should be noted that if stack height is reduced, this may reduce air dispersion and therefore adversely affect their Environmental Impact Assessment.

In summary, we consider that the proposed changes do not represent a material change to the application. Notwithstanding this, we acknowledge that there may be other issues for example visual appearance and landscape issues, resulting from the proposed changes, which fall outside of our remit to comment upon but could constitute a material change.

If you have any questions in respect of the above, please do not hesitate to contact me.

Yours faithfully

Louise Tait
Senior Planning Advisor



From:
To:
Cc:
Subject: Request for further information from all Interested Parties
Date: 29 May 2018 15:50:01
Attachments: [Relevant Representation to the Tees Combined Cycle Power Plant Order.pdf](#)

Good afternoon,

RE: Planning Act 2008 (as amended) and The Infrastructure Planning (Examination Procedure) Rules 2010 (as amended) – Rule 17
Application by Sembcorp Utilities (UK) Limited for an Order Granting Development Consent for the Proposed Tees CCPP Project
Request for further information from all Interested Parties
Proposed Changes to the Original Application

Please refer to National Grid's relevant rep submitted to the planning inspector in February 2018. National Grid's position is unchanged

Mike Hudson (cc) will continue to negotiate a new head lease on the proposed site.

Regards

Spencer Jefferies BSc

Development Liaison Officer
Acquisitions and Surveying
Network Management

National Grid House, Warwick Technology Park
Gallows Hill, Warwick. CV34 6DA

General enquiries: box.landandacquisitions@nationalgrid.com

In order to deal with your query/request, we may need to collect your personal data. For more information on National Grid's privacy policy in respect of your personal data, please see the attached link: <https://www.nationalgrid.com/uk/privacy-policy>

This e-mail, and any attachments are strictly confidential and intended for the addressee(s) only. The content may also contain legal, professional or other privileged information. If you are not the intended recipient, please notify the sender immediately and then delete the e-mail and any attachments. You should not disclose, copy or take any action in reliance on this transmission.

You may report the matter by contacting us via our [UK Contacts Page](#) or our [US Contacts Page](#) (accessed by clicking on the appropriate link)

Please ensure you have adequate virus protection before you open or detach any documents from this transmission. National Grid plc and its affiliates do not accept

any liability for viruses. An e-mail reply to this address may be subject to monitoring for operational reasons or lawful business practices.

For the registered information on the UK operating companies within the National Grid group please use the attached link: <https://www.nationalgrid.com/group/about-us/corporate-registrations>

This email has been scanned by the Symantec Email Security.cloud service.
For more information please visit <http://www.symanteccloud.com>

Representation by National Grid Electricity Transmissions Plc to the Tees Combined Cycle Power Plant Order 201*

NATIONAL GRID ELECTRICITY INFRASTRUCTURE IN THE VICINITY OF THE PROPOSED WORKS

National Grid Electricity Transmission PLC (“NGET”) has high voltage electricity overhead transmission lines, underground cables and high voltage substations within and in close proximity to the order limits. The overhead lines, cables and substations form an essential part of the electricity transmission network in England and Wales and include the following:

Overhead lines:

- YYV (275kV) overhead line route
- YYX (275kV) overhead line route
- ZZA (400kV) overhead line route

Underground cables

- Greystones A1 275kV cable
- Greystones A2 275kV cable
- Greystones B3 275kV cable
- Greystones B4 275kV cable

Substations:

- Wilton 275kV Substation
- Greystones 66kV Substation
- Greystones A 275kV Substation
Greystones B 275kV Substation

In respect of all NGET infrastructure located within the DCO boundary, or in close proximity to the proposed project and associated works, NGET will require protective provisions to be put in place to ensure appropriate protection for the retained apparatus is maintained during and after construction of the project including compliance with all relevant standards on safety clearances “EN 43 -8”, “Development near overhead lines” and HSE Guidance Note GS6 “Avoiding Danger from Overhead Electric Lines”.

OVERVIEW

In relation to the NGET assets, relevant guidance can be provided on request. Plans showing the Electricity Assets in the area can also be provided on request.

In light of the above infrastructure being located within the DCO boundary or in the vicinity of it, National Grid Electricity Transmission PLC wish to make a relevant representation to the above DCO in order to protect their position given the existence of this infrastructure and any other equipment within or adjoining the DCO boundary not already identified. Additionally National Grid want to ensure that any connections taken to their existing equipment are carried out in an approved manner.

National Grid’s rights to retain its apparatus in situ and rights of access to inspect, maintain, renew and repair such apparatus located within or in close proximity to the order limits should be maintained at all times and access to inspect such apparatus must not be restricted.

Appropriate protective provisions will be required to be included within the DCO to ensure that National Grid's apparatus and land interests are adequately protected and to include compliance with National Grid's relevant safety standards. National Grid is currently in discussion with the promoter in order to secure appropriate protective provisions.

As a responsible statutory undertaker, National Grid's primary concern is to meet its statutory obligations and ensure that any development does not impact in any adverse way upon those statutory obligations.

National Grid reserves the right to make further representations as part of the examination process but in the meantime will contact the promoter to start negotiations with a view to reaching a satisfactory agreement.